

Contamination of Ground Water By Sewage



**CENTRAL GROUND WATER BOARD
MINISTRY OF WATER RESOURCES
GOVERNMENT OF INDIA**

**FARIDABAD
2011**

Contamination of Ground Water by Sewage

Compiled by

Dr. S. K. Jain

Scientist-‘D’

&

Dr. Vivek Sharma

Senior Technical Assistant



**CENTRAL GROUND WATER BOARD
MINISTRY OF WATER RESOURCES
GOVERNMENT OF INDIA**

**FARIDABAD
2011**

Contamination of Ground Water by Sewage

CONTENTS

1. Introduction

- 1.1 Background
- 1.2 Composition of Sewage
- 1.3 Sources of Sewage
 - 1.3.1 Raw Sewage Overflow
 - 1.3.2 Septic Tanks
 - 1.3.3 Poor placement of septic leach fields
 - 1.3.4 High density placement of tanks
 - 1.3.5 Leakage from Sewer Lines
 - 1.3.6 Synthetic Detergents

2 Attenuation of Polluting Plume

3 Contamination of Ground Water

4 Health effects

5 Selected Case Studies

- 5.1 Maharashtra
 - 5.1.1 Nagpur city
 - 5.1.2 Amravati district
- 5.2 Tamil Nadu
 - 5.2.1 Chennai area
 - 5.2.2 Coimbatore district
 - 5.2.3 Vellore district

6 Scenario of Nitrate Contamination in Ground Water in India

7 Mitigation Measures for Nitrate

- 7.1 Alternate source
- 7.2 In situ treatment in the ground
- 7.3 Reverse osmosis
- 7.4 Ion-exchange
- 7.5 Electrodialysis
- 7.6 Biological treatment
- 7.7 Denitrification using hydrogen
- 7.8 Denitrification using sulphur
- 7.9 Heterotrophic denitrification

8.0 Essential Investigations and Recommendations

- 8.1 Analytical problems
- 8.2 Source and levels in the environment
- 8.3 Surveys of methaemoglobinemia in relation to nitrate concentration in water
- 8.4 Medical treatment and public health action
- 8.5 Agriculture factors
- 8.6 Denitrification of water containing high nitrates

9.0 Conclusion

References

Plate-I

Annexure

Contamination of Ground Water by Sewage

1.0 Introduction

1.1 Background

It is generally assumed that ground water is safe (free from pathogenic bacteria), it does not contain harmful constituents, it is free from suspended matter because the rainwater, which is the primary source of ground water, has moved through soil and unsaturated zone before meeting the ground water. It gets cleaned and purified due to number of physical, chemical and biological activities and processes such as oxidation and reduction, adsorption, precipitation, etc. The belief that ground water is safe is not true under all circumstances. The unscientific disposal of human and animal wastes is found to be the main anthropogenic activity that has led to the contamination of ground water with microorganisms, nitrates, potassium etc.

Contamination of drinking water sources by sewage can occur from raw sewage overflow, septic tanks, leaking sewer lines, land application of sludge and partially treated waste water. Sewage itself is a complex mixture and can contain many types of contaminants. The greatest threats posed to water resources arise from contamination by bacteria, nitrates, metals, trace quantities of toxic materials, and salts. Sewage overflow into drinking water sources can cause disease from the ingestion of microorganisms such as E coli, Giardia, Cryptosporidium, Hepatitis A, and helminths.

1.2 Composition of Sewage

Human and animal excreta (faeces, dung, urine, etc) contain a variety of pollutants inorganic, organic and microbiological, which can affect ground water quality adversely. Human and animal waste loaded with microbiological pollutants may contain four types of pathogens (disease causing bacteria) like eggs of helminthes (worms), protozoa, bacteria and viruses. Human's faecal matter on an average contains 10⁹ bacteria/gram (not of them pathogenic) and in case of infected person, faecal matter may contain as high as 10⁶ viruses/gram.

The soil regularly receives refuse and organic matter in the form of human and animal wastes, sewage, manure, compost, sewage from pans, septic tanks, pit latrines, barnyard wastes, irrigation by sewage etc. All these release pathogens to environment. Graveyards may abound in *clostridium tetani*, which causes tetanus disease in man and animal, Cattle graves may abound in *bacillus anthrax*, which cause anthrax, an acute infectious disease in man and animal. *Clostridium botulinum*, a strictly anaerobic bacillus, has been found to be present in cultivated soils; in offal dumps (waste of carcasses, slaughter house waste), which are potent reservoirs of botulism germs.

1.3 Sources of Sewage

The main sewage sources contaminating the ground water are as follows-

1.3.1 Raw Sewage Overflow : Storm water systems in urban areas are sometimes combined with sanitary sewer systems en route to sewage treatment plants. Excessive

storm water can cause this joint system to overflow. In this event, excess flow will be directed into waterways untreated, resulting in sewage contamination. According to the EPA (1990) approximately 20% of the population is served by combined systems. Forty-six percent of the population is served by separate systems. Urban runoff is usually collected by a separate storm sewer system and discharged directly into waterways. Combined systems are cheaper, but the potential to harm health is higher. Some systems have diversions to accommodate heavy flow.

1.3.2 Septic Tanks : Septic tanks contaminate 1% of the nations usable aquifers. Septic tanks are enclosures that store and process wastes where no sewer system exists, such as in rural areas or on boats. Treatment of waste in septic tanks occurs by bacterial decomposition. The resulting material is called sludge. Large portions of the population are still served by septic systems as opposed to public waste treatment facilities. Contamination of water from septic tanks occurs under various conditions:

1.3.3 Poor placement of septic leach fields can feed partially treated waste water into a drinking water source. Leach fields are part of the septic system for land based tanks and include an area where waste water percolates through soil as part of the treatment process. Badly constructed percolation systems may allow water to escape without proper treatment. System failure can result in clogging and overflow to land or surface water.

1.3.4 High density placement of tanks, as in suburban areas, can result in regions containing very high concentrations of waste water. This water may seep to the land surface, run-off into surface water or flow directly into the water table. There are also site specific environmental factors around the tank and leach field such as soil properties, water table location, subsurface geology, climate, and vegetation which may affect the quality and quantity of released waste water.

1.3.5 Leakage from Sewer Lines: Effluent that leaks from sewer lines is generally untreated raw sewage. It may contain industrial waste chemicals. When leaking sewer lines are located deep underground below the biologically active portion of the soil, the sewage can enter groundwater directly. This can result in the introduction of chlorides, microorganisms, organics, trace metals and other chemicals that may cause disease and foul tastes or odors in drinking water.

Sewer leaks can occur from tree root invasion, soil slippage, seismic activity, loss of foundation due to washout, flooding and sewage back up, among other events. High pressure systems will push leaks to the soil surface where they can be easily detected by sight or odor. Systematic inspection of sewer lines, exclusion of hazardous waste, and adherence to modern construction and maintenance specifications are necessary preventative measures for protection of groundwater sources from sewer leaks.

Even though lot of work has been done on the migration of pollutants in the soil, unsaturated and saturated zone, still much information is not available on the behavior of microorganism in ground water. The pollutant plume normally has to migrate through the unsaturated zone before reaching the saturated zone, where it travels along the

hydraulic gradient. Here plume gets mixed with ground water by diffusion and convection processes. During its downward passage through the unsaturated zone, the pollutant plume gets attenuated depending upon several factors like nature of pollutant, its loading, soil etc.

1.3.6 Synthetic Detergents:- The increasing use of synthetic detergents in household and industry is creating problems in maintaining potable water supplies. Because detergents are not successfully removed by most sewage treatment operations, their concentration is steadily increasing in many of our water courses. Babbitt (1962) and numerous others have shown that synthetic detergents cause foaming; affect the taste and odor of water; make coagulation, settling and filtration more difficult; increase the difficulty of iron and manganese removal; increase the difficulty of generation of base rxchange materials; may produce physiological reactions such as nausea; are toxic to tropical fish; cause increased corrosivity; and deteriorate the quality of water in distribution system. They also possess the ability to destroy bacteria and other living organisms some of which are important to biological treatment operations.

Indications are that detergents persists in stream waters for considerable periods and may thus adversely affect coagulation processes in water treatment plants far downstream. There are also indications that detergents may affect results of tests such as the test for biochemical oxygen demand. Solutions to many of the problems created by synthetic detergents are not yet available and a great need exists for the development of procedures for the removal of these substances from our waters.

2.0 Attenuation of Polluting Plume

Processes like adsorption, filtration, action of local or native flora and fauna, sunlight (UV-light) etc tend to attenuate the polluting plume. Pathogens like those causing dysentery bacilli and cholera viruses etc being foreign to the soil environment tend to die away for want of optimum conditions but they do so within different time periods depending *interalia* on pH, temperature, organic matter content, moisture content of the soil etc.

Rainwater affects bacterial adsorption adversely by lowering ionic concentrations and increasing infiltration rates. Rainwater infiltrating into the saturated zone also raises the water table and may thus lower the effective depth of the soil cover or that of the unsaturated zone affecting the purification processes adversely. However, a portion of this waste is lost as run off, a portion is lost by microbial decomposition, a portion is held up in soil and balance can leach to the saturated zone. Similarly, considerable amount of N, P and K compounds are released to the environment through animal waste, a portion of which may reach ground water body, affecting its quality adversely.

3.0 Contamination of Ground Water

High nitrate concentrations found in ground water in several urbanized localities in India are likely to be attributed to these sources. Similarly in villages, occurrence of high

nitrate concentration in wells located near habitation may also be due to these sources. The sandy strata, oxidizing conditions coupled with low recharge are conducive to the enrichment of ground water by nitrate and potassium ions contained in human and animal wastes.

4.0 Health effects

NO_3 is an oxidizing agent and is readily oxidizes haemoglobin (Hb) in to methaemoglobin (MeHb) a blue coloured pigment and gets reduced to NO_2 . The oxidized Hb impairs seriously the oxygen carrying capacity of the blood and thus causes hypoxia, which may have fatal consequences in anaemic individuals and infants under 8 weeks of age. The MeHb formed in the infant blood gives a characteristic bluish to the skin and mucous membrane, thus giving the name “Blue Baby Syndrome”. This condition is particularly important in the case of infants because the infant and the foetal – Hb, which is $\alpha_2\gamma_2$ type has greater affinity for oxygen (O_2) than adult Hb which is $\alpha_2\beta_2$ type. This condition may also results by birth due to the deficiency of an enzyme known as methaemoglobin reductase in the foetal blood. This enzyme catalyse the reversion of MeHb to Hb as follows.



Thus the Me-Hb formed in the foetal blood severely impairs the oxygen carrying capacity of the blood in infants, causing the blue baby disease. Thus infants are most susceptible to NO_3 more than 45 mg/l, at least for 4 months of time, till the time the foetal blood gets converted to adult Hb.

In India, high concentration of nitrate has been observed as point sources in most of the districts of the country.

5.0 Selected Case Studies

Central Ground Water Board has carried out some of the studies on impact of Sewerage and domestic effluents on ground water quality. The findings of these studies are discussed as follows:

5.1 Maharashtra:- Details of case studies from Maharashtra are as follows;

5.1.1 Nagpur city: A study was taken up to evaluate the nitrate concentration in ground water from pollution in Nagpur city area of Maharashtra, India. A set of 116 samples from bore wells and dug wells were established over the entire city area from which water level data and water samples for chemical analysis were collected during pre and post-monsoon period i.e. May and October 1999 respectively.

Nagpur city has an areal extent of 217 Sq. Km. and population of the city is 16.2 lakh as per 1991 census. The city is underlain by Crystalline rocks of Archaean group, sedimentary rocks of Gondwana group, Lametas, Basaltic lava flows and alluvium. Depth

to water level during pre-monsoon period ranges from 1.15 to 13.6 m bgl, while during the post-monsoon period it ranges from 0.60 to 10.5 m bgl.

The nitrate content of ground water during May month ranged from 0.70 to 422 mg/L while during October, these values ranged from traces to 948 mg/L. Out of 116 samples collected, 34 water samples (29.32%) were found to be above desirable limit of 45 mg/L and exactly same number of samples i.e. 34 (29.32%) samples showed nitrate content beyond permissible limit of 100 mg/L, only 48 (41.36%) samples were found to be containing nitrate below 45 mg/L. Very little to high leaching of nitrate has taken place in almost 50% of wells examined. Lower concentration of nitrate in the samples from remaining wells of the area is likely to be due to dilution from precipitation.

The main stream of the city is Nag river which has become a sewage disposing drain. It traverses through the city from west to east. The untreated city sewage is disposed off in this river through pipes and drain. The results of the chemical analysis revealed that there is a big patch of high nitrate content of the ground water upto 948 mg/L in the adjoining areas of Nag river in eastern part of the city in Bhandewadi, where the population density is very high because of presence of many slums. The adjoining area at the start of the Nag river in the west of the city shows very less concentration of below 45 mg/L nitrate in ground water, which probably indicates increasing concentration from west to east attributing to amount of sewage going into the river as per the population density.

High nitrate content of more than 200 mg/L have also been found in the adjoining slums of the current landfill of Nagpur city in Bhandewadi and old landfills areas like Kalamana and Mahakalekar Lay-out. High values of more than 100 mg/L have also been found in wells near heap of cattle excreta, slums, agricultural fields and abundant public lavatories in areas like Nari, Jaitala, Binaki, Khamla, Gayatri nagar, Shanti nagar and more. The study reveals that the sewage nala, animal waste, slums and localized factors are the major sources of nitrate pollution of ground water in Nagpur city.

5.1.2 Amravati district: A study was taken around Jarud town situated 4 kms west of Warud Taluka in Amravati district of Maharashtra State to see the impact of direct injection/ disposal of sewage in the ground water regime. The intensive pumpage of ground water in the area is beyond its annual replenishable limit. The ground water levels are declining continuously which has led to drying up of dug wells and rendering these wells unused. The local inhabitants of Jarud have converted these unused unlined dugwells into latrines. As such, the sewage is being disposed into the dried aquifer having a direct continuity to the ground water reservoir.

In order to study the impact of direct injection/ disposal of sewage in the ground water regime, 20 water samples were collected from nearby borewells and dugwells. The chemical analysis results show that the nitrate content amongst these samples varies from 29 to 271 mg/L. In 19 out of 20 samples collected, the nitrate content is found beyond its permissible limit of 45 mg/L. The bacteriological analyses of few samples have indicated the presence of faecal coliform bacteria in ground water. The BOD, which is generally not found in ground water at greater depth, is also recorded in the village at the depth of

more than 20 m bgl in the range varying from 0.96 to 5.29 mg/L. This indicates the presence of organic matter into the ground water at such depths.

The higher values of nitrate, presence of faecal coliform bacteria and BOD at greater depth indicate the percolation of the sewage and domestic waste into the ground water reservoir of the area. This can be a potential source of epidemic though no such case has yet been reported in the area.

5.3 Tamil Nadu

Groundwater pollution studies have been carried out in different parts of the state and their brief summary are as follows;

5.2.1 Chennai area: A study carried out at Ambattur industrial area of Chennai suburban area covering 70 sq. kms shows the concentration of nitrate ranged between 0-258 mg/L. Out of 54 samples 21 samples (39%) of samples showed nitrate >45 mg/l. Most of these high nitrate samples are collected from residential areas, however, most of the samples from industrial area showed <45 mg/l of nitrate. This indicates that domestic waste leads to more nitrate problem than industries of this area, as most of the industries are metal/steel based industries.

A study carried out at Manali industrial area (north Chennai) covering 85 sq. kms showed the nitrate concentration ranged between 0 and 347 mg/l. Out of 67 samples collected 30 samples showed nitrate <45 mg/l (45%), 15 samples (22%) showed between 45 and 100 mg/l, and 22 samples (33%) showed >100 mg/l. In this study higher values are noticed within industrial area.

In a study carried out at Chrompet tannery area of south Chennai, 65 samples were collected from an area of 45 sq.kms. Nitrate level ranged between 15 and 452 mg/l. 19 samples (30%) had nitrate concentration <45 mg/l, 10 samples (15%) had nitrate concentration between 45 and 100 mg/l, and 36 samples (55%) had nitrate >100 mg/l.

5.2.2 Coimbatore district: A study carried out at Tirupur block of Coimbatore district covering an area of 363 sq. kms. Tiruppur is famous for knitted fabrics. About 90% knitted fabric export of the country is from Tiruppur. The knitting industry comprises bleaching, dyeing, printing, sizing, de-sizing and finishing processes. Out of the 86 water samples collected from various wells 18 wells have nitrate concentration below 45 mg/l the limit for drinking water as per BIS. The remaining wells Nitrate concentration is more than 45 mg/l with the maximum value of 714 mg/l at Authupalayam. In the unpolluted areas Nitrate is found to be less than Chloride and bicarbonate, whereas in the polluted areas Nitrate is the one of the dominant anion, which confirms their anthropogenic origin.

5.2.3 Vellore district: Ground water pollution studies in Upper Palar Basin, were carried out in an area of about 300 sq. km in Ranipet, Ambur-Pernampattu – Vaniyambadi areas in Vellore district. The area is known as tannery belt and 117 samples were collected from dug wells. The analysis of Nitrate showed that in 88% of the samples it is less than 45 mg/l and 9% of the samples in the range of 45 to 100 and 3% are above 100 mg/l.

6.0 Scenario of Nitrate Contamination in Ground Water in India

Nitrate is a naturally occurring compound that is formed in the soil when nitrogen and oxygen combine. The primary source of all nitrates is atmospheric nitrogen gas. This is converted into organic nitrogen by some plants by a process called nitrogen fixation. Dissolved Nitrogen in the form of Nitrate is the most common contaminant of ground water. Nitrate in ground water generally originates from non point sources such as leaching of chemical fertilizers & animal manure, ground water pollution from septic and sewage discharges etc. It is difficult to identify the natural and man made sources of nitrogen contamination of ground water. Some chemical and micro-biological processes such as nitrification and denitrification also influence the nitrate concentration in ground water.

As per the BIS Standard for drinking water the maximum desirable limit of Nitrate concentration in ground water is 45 mg/l with no relaxation. Though Nitrate is considered relatively non-toxic, a high nitrate concentration in drinking water is an environmental health concern arising from increased risks of Methemoglobinemia particularly to infants. Adults can tolerate little higher concentrations. The specified limits are not to be exceeded in public water supply. If the limit is exceeded, water is considered to be unfit for human consumption. Table shows the districts where nitrate has been found in excess of 45 mg/l in ground water.

Table: Districts Showing Localized Occurrence of Nitrate (>45mg/l) in Ground Water in Different States of India

S. No.	State	Parts of Districts having Nitrate> 45mg/l
1.	Andhra Pradesh	Adilabad, Anantpur, Chittoor, Cuddapah, East Godavari, Guntur, Hyderabad, Karimnagar, Khammam, Krishna, Kurnool, Mahbubnagar, Medak, Nalgonda, Nellore, Nizamabad, Prakasam, Ranga Reddy, Srikakulam, Visakhapatnam, Vizianagaram, Warangal, West Godavari
2.	Bihar	Aurangabad, Banka, Bhagalpur, Bhojpur, Bhabua, Patna, Rohtas, Saran, Siwan
3.	Chhatisgarh	Bastar, Bilaspur, Dantewada, Dhamtari, Jashpur, Kanker, Kawardha, Korba, Mahasamund, Raigarh, Raipur, Rajnandgaon
4.	Delhi	Central Delhi, New Delhi, North Delhi, North West Delhi, South Delhi, South West Delhi, West Delhi
5.	Goa	North Goa
6.	Gujarat	Ahemadabad, Amreli, Anand, Banaskantha, Bharuch, Bhavnagar, Dohad, Jamnagar, Junagadh, Kachchh, Kheda, Mehsana, Narmada, Navsari, Panchmahals, Patan, Porbandar, Rajkot, Sabarkantha, Surat, Surendranagar, Vadodara,
7.	Haryana	Ambala, Bhiwani, Faridabad, Fatehabad, Gurgaon, Hissar, Jhajjar, Jind, Kaithal, Karnal, Kurukshetra, Mahendergarh, Panchkula, Panipat, Rewari, Rohtak, Sirsa, Sonapat, Yamuna Nagar
8.	Himachal Pradesh	Una
9.	Jammu & Kashmir	Jammu, Kathua

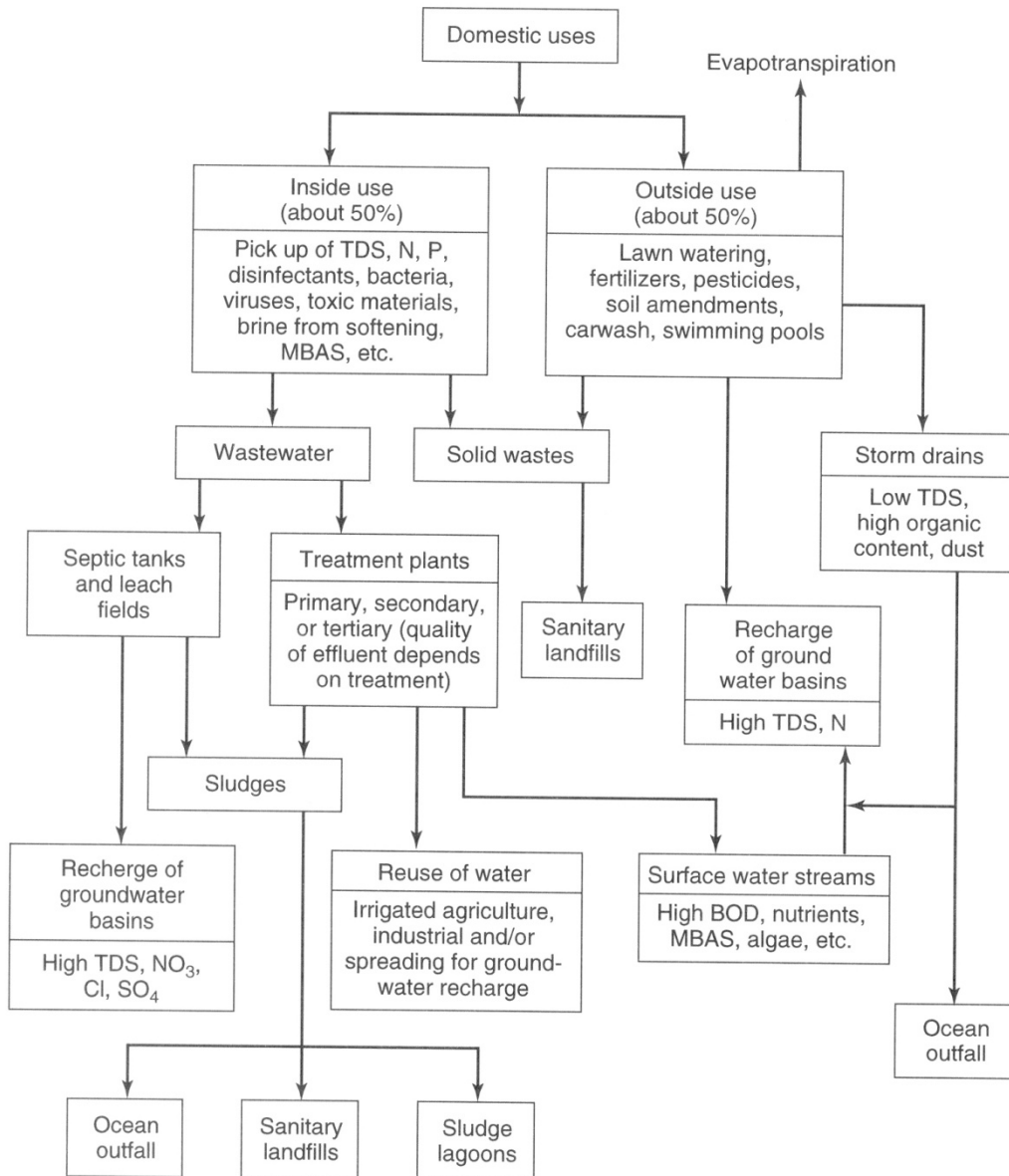
10.	Jharkhand	Chatra, Garhwa, Godda, Gumla, Lohardaga, Pakur, Palamu, Paschimi Singhbhum, Purbi Singhbhum, Ranchi, Sahibganj
11.	Karnataka	Bagalkot, Bangalore, Belgaum, Bellary, Bidar, Bijapur, Chamarajanagara, Chikmagalur, Chitradurga, Davangere, Dharwad, Gadag, Gulbarga, Hassan, Haveri, Kodagu, Kolar, Koppal, Mandya, Mysore, Raichur, Shimoga, Udupi, Uttara Kannada
12.	Kerala	Alappuzha, Idukki, Kollam, Kottayam, Kozhikode, Malappuram, Palakkad, Pathanamthitta, Thiruvananthapuram, Thrissur, Wayanad
13.	Maharashtra	Ahmednagar, Akola, Amravati, Auragabad, Beed, Bhandara, Buldana, Chandrapur, Dhule, Gadchiroli, Gondia, Hingoli, Jalgaon, Jalna, Kohlapur, Latur, Nagpur, Nanded, Nandurbar, Nashik, Osmanabad, Parbhani, Pune, Sangli, Satara, Solapur, Wardha, Washim, Yavatmal
14.	Madhya Pradesh	Anuppur, Ashok Nagar, Balaghat, Barwani, Betul, Bhind, Bhopal, Burhanpur, Chhatarpur, Chhindwara, Damoh, Datia, Dewas, Dhar, Gwalior, Harda, Hoshangabad, Indore, Jabalpur, Jhabua, Katni, Khandwa, Khargaon, Mandla, Mandsaur, Morena, Narsimhapur, Neemuch, Panna, Raisen, Rajgarh, Ratlam, Rewa, Sagar, Satna, Sehore, Seoni, Shahdol, Shajapur, Sheopur, Shivpuri, Sidhi, Tikamgarh, Ujjain, Umaria, Vidisha
15.	Orissa	Angul, Balasore, Bargarh, Bhadrak, Bolangir, Boudh, Cuttack, Deogarh, Dhenkanal, Gajapati, Ganjam, J.Singhpur, Jajpur, Jharsuguda, Kalahandi, Kendrapara, Keonjhar, Khurda, Koraput, Malkangiri, Mayurbhanj, Nawapada, Nayagarh, Phulbani, Puri, Sambalpur, Sundergarh, Sonapur
16.	Punjab	Amritsar, Bhathinda, Faridkot, Fatehgarh Sahib, Firozepur, Gurdaspur, Hoshiarpur, Jalandhar, Kapurthala, Ludhiana, Mansa, Moga, Muktsar, Nawan Shahr, Patiala, Rupnagar, Sangrur
17.	Rajasthan	Ajmer, Alwar, Banaswara, Baran, Barmer, Bharatpur, Bhilwara, Bikaner, Chittaurgarh, Churu, Dausa, Dhaulpur, Dungarpur, Ganganagar, Hanumangarh, Jaipur, Jaisalmer, Jalor, Jhalawar, Jhunjhunu, Jodhpur, Karauli, Kota, Nagaur, Pali, Partapgarh, Rajsamand, Sirohi, Sikar, Sawai Madhopur, Tonk, Udaipur
18.	Tamil Nadu	Chennai, Coimbatore, Cuddalore, Dharmapuri, Dindigul, Erode, Kancheepuram, Kanyakumari, Karur, Madurai, Namakkal, Nilgiris, Perambalur, Pudukkottai, Ramanathapuram, Salem, Sivaganga, Theni, Thiruvannamalai, Thanjavur, Thirunelveli, Tiruvallur, Trichi, Tuticorin, Vellore, Villupuram, Virudhunagar
19.	Uttar Pradesh	Agra, Aligarh, Allahabad, Ambedkar Nagar, Auraiya, Badaun, Baghpat, Balrampur, Banda, Barabanki, Bareilly, Basti, Bijnor, Bulandshahr, Chitrakoot, Etah, Etawa, Fatehpur, Firozabad, GB Nagar, Ghaziabad, Ghazipur, Hamirpur, Hardoi, Jaunpur, Jhansi, Kannauj, Kanpur Dehat, Lakhimpur, Mahoba, Mathura, Meerut, Moradabad, Muzaffarnagar, Raebareli, Rampur, Sant Ravidas Nagar, Shahjahanpur, Sitapur, Sonbhadra, Sultanpur, Unnao
20.	Uttarakhand	Dehradun, Haridwar, Udham Singhnagar
21.	W. Bengal	Bankura, Bardhaman

Source: CGWB, as on March, 2008

The occurrences of Nitrate in ground water beyond permissible limit (45 mg /l) have been shown on the map as a point source (Plate-I) and also given in Annexure.

7.0 Mitigation Measures for Nitrate

Proper collection and disposal of human and animal wastes can mitigate the problems associated with ground water contamination from sewage and leachates of these sources. A flow diagram depicting the management of Sewage water for re-use and safe disposal is given as follows



The treatment methods recommended for removing nitrates from water are mostly through Ion exchange, Reverse Osmosis and Electrodialysis. A brief note on different methods follows (Bulusu & Pande, 1990);

7.1 Alternate source

Hydrogeological investigation will provide information on the availability of better water resources which could be used for dilution or more simply for replacement of more polluted source.

7.2 In situ treatment in the ground

This technique involves transforming the nitrates in the aquifer into gaseous nitrogen and is achieved by injecting suitable reducing agent through wells or boreholes. In principle, the reaction could go through from nitrate to nitrite and to nitrogen and eventually to ammonia. The problem is thus to control the reaction to produce maximum nitrogen which can evolve from the water. Otherwise, either nitrate or ammonia will have to be retransformed to nitrate when water is abstracted before its distribution.

7.3 Reverse osmosis

The limitations of reverse osmosis relate to: (i) retention of the species is non-specific and alters the initial composition of water considerable (ii) pretreatment is absolute requirement in order to avoid fouling of membranes: and (iii) disposal of concentrate waste require treatment.

7.4 Ion-exchange

There is considerable literature on nitrate removal by ion exchange. Laboratory experiments have shown that ion exchange resin can reduce nitrate concentration from as high as 250 mg/l (NO_3) to 2.5 mg/l. This technique has been the subject of several studies as well as the pilot plant application using strongly basic anion exchange resin. The nitrates are not the only anions exchanged by the resin in the chloride form, and the capacity of the resin for the sum of nitrate and sulphate and possibly carbonates are to be considered. Ion exchange appears to be simple in use and offers good reproducibility. However, the nitrates will be concentrated in brine and pose a disposal problem.

7.5 Electrodialysis

This technique which employs the principle of electrolysis combined with the use of selective membranes is applied to the removal of nitrates. The principle characteristics of the treatment are average specificity and limited efficiencies, need for pretreatment and generation of a fairly concentrated waste.

7.6 Biological treatment

Although long applied in slow sand filtration, bacterial microorganism, capable of reducing nitrates have been harnessed only recently for a specific treatment application. Biological denitrification as applied to drinking water comprises fixing the bacteria on a substrate to increase the population of active flora, while keeping them inside the biological reactor, which makes possible an increase in the efficiency of the biological reaction. These processes use autotrophic or heterotrophic bacteria which convert nitrates into gaseous nitrogen provided they have an oxidisable substrate which may be a solid as sulphur a liquid such as a carbon compound or a gas such as hydrogen.

7.7 Denitrification using hydrogen

This process of which little is known so far, uses autotrophic bacteria to carry out the reaction: $2\text{NO}_3^- + 5\text{H}_2 \leftrightarrow \text{N}_2 + 2\text{OH}^-$. To make use of these processes, hydrogen is introduced into the reactor itself, which is an activated carbon bed of 1.5-2.0 m depth. This process has two potential problems: long contact time required to avoid nitrites and use of hydrogen gas, which involves explosive risks.

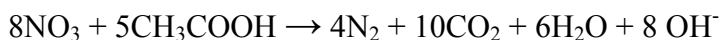
7.8 Denitrification using sulphur

The process utilizes *Thiobacillus denitrificans* and has known for many years. Under anaerobic conditions, the autotrophic bacteria utilize the energy related by the reaction:



7.9 Heterotrophic denitrification

The process seems the most suggested for large volumes of water. It uses heterotrophic microorganisms, which require a carbon containing nutrient. With acetic acid as carbon substrate, the reaction is.



The release of OH^- in principle compensated by the formation of carbonic acid and overall change in pH remains small. Groundwater sources do not generally contain organic carbon for the reaction. Therefore, a biodegradable carbon compound which complies with drinking water quality regulations is necessary. Using acetic acid utilization efficiency of approximately 80% is reported in literature. The heterotrophic biological process appears reliable and at present a majority of the operating plants for removal reportedly use this technique.

8.0 Essential Investigations and Recommendations

The potential health hazard associated with the presence of nitrate and nitrite in foods and drinking water must be considered from two stand points. First nitrite formed by reduction of nitrate in food, water and in the body is known to cause methaemoglobinaemia particularly in children. Secondly, under certain conditions, nitrites react chemically with a wide range of secondary and tertiary amines and amides to produce N nitroso compounds. Most of these compounds are potent carcinogens. There is no systematic data available in India on nitrates distribution and their trend over a period of time. No information is available on the evaluation of health risk. It is, therefore, necessary that a following essential investigations are undertaken for baseline data:

8.1 Analytical problems

- (i) Evaluation of analytical procedures for nitrates by comparison of the procedures and results reported by participating laboratories in India.
- (ii) Improvement or replacement of existing methods.

(iii) Exchange of information regarding method characteristics. Unless this is done, it is difficult to compare the studies reported by one laboratory with those reported by another.

8.2 Source and levels in the environment

Surveys of nitrate levels in soils, water, foods and air are required for quantitative data and their changing trend with time together with reliable information concerning other factors considered to have an effect on these levels. It is important that levels determined in surveys should be on the basis of standardized analytical methods to facilitate eventual comparison of data from all sources. The information from the surveys is to be consolidated and detailed maps showing the levels of nitrate at district, state and national level are to be prepared for further monitoring and correction where necessary.

8.3 Surveys of methaemoglobinemia in relation to nitrate concentration in water

The primary cause of infantile methaemoglobinaemia are elevated nitrate concentration in the diet together with large numbers of nitrate reducing bacteria in the upper digestive tract. There is considerable variability in the health resistance of infants to nitrates in water constitutionally and associated with hereditary factors. For all these reasons, there should be some safety factor built into permissible level of nitrate in water to make allowance for these possibilities. Attempts should be made for predicting the extent of methaemoglobinaemia from nitrate intake over range of ages (say 1,2,3,6,12 months; 3, 5 years and adults) under Indian conditions. This information is essential for recommending maximum contaminant level (MCL) for nitrates in water. At present this limit is 45 mg/l NO_3 which provides a margin of safety against many aggravating factors.

8.4 Medical treatment and public health action

- (i) Medical authorities to look out and report for cases for cyanosis among infants and to check whether infant foods are used in high nitrate areas, where the local well waters may be used for the preparation of the baby foods.
- (ii) Educational programmes about the effects of high nitrates, in water should be prepared and propagated to mother and paediatricians.

8.5 Agriculture factors

High concentrations of nitrates may be found in the ground water supplies of communities in intensely worked agricultural areas. In these and certain other area as in Rajasthan, the nitrate concentration in ground water often exceeds 45 mg/l. Seasonal variations may show a relationship with added artificial fertilizers containing nitrate. The impact of this is to be assessed and quantified where possible.

8.6 Denitrification of water containing high nitrates

A number of processes which are theoretically usable for the removal of nitrate are known and have been tested in pilot plants. There is an urgent need to improve their feasibility to suit Indian conditions, to develop large scale methods and to lower their cost. But one other way, which is easier to apply and less expensive could be search for the origin of nitrogen in all its forms and to control these nitrogen sources. Hydrogeological investigations should be carried out prior to any decision on treatment requirements.

For scattered populations dependent on shallow wells, a low nitrate bottled water supply may be feasible alternative to regular water treatment. The overall cost of such an alternative should be investigated. Such water, permitted mainly for infant feeding, should be supplied in small containers to reduce the hygiene risks.

9.0 Conclusion

As general rule, a geological investigation should be carried out prior to any treatment decision. Both physico-chemical and biological treatments will remove nitrates and also change the overall composition of water. The real cost of treatment by any technique will depend upon local factors and characteristics of water to be treated and the cost effluent disposal as in ion exchange and reverse osmosis techniques. Calculations of the capital cost and operating cost indicate that ion-exchange treatment appears cheapest followed by heterotrophic biological denitrification. However, a systematic study is essential to work out their real cost, maintenance and operational problem and overall efficiency.

It is estimated that the global mean N use efficiency is about 50%. The remaining quantity of nitrogen is lost into the environment. Among the various options available to reduce nitrate leaching are cover crops, using specific management practices, use of nitrification inhibitors or controlled-release fertilizers, site-specific crop management, variable rate application, proper scheduling of irrigation, sprinkler or drip irrigation with fertilization, banding and split application, chlorophyll measurement or colour chart based nitrogen application, foliar application, etc. Balanced application of N, P and K can significantly reduce the amount of unutilized nitrate in the root zone. Several microorganisms and plants are known to be good agents for denitrification.

ACKNOWLEDGEMENTS

The authors express their sincere thanks to Dr. S. C. Dhiman, Chairman, Shri Subrata Kumar, Member (SAM) and Shri Sushil Gupta, Member (WQ & TT), Central Ground Water Board for their constant guidance and encouragement rendered during preparation of this document on 'Contamination of Ground Water by Sewage'.

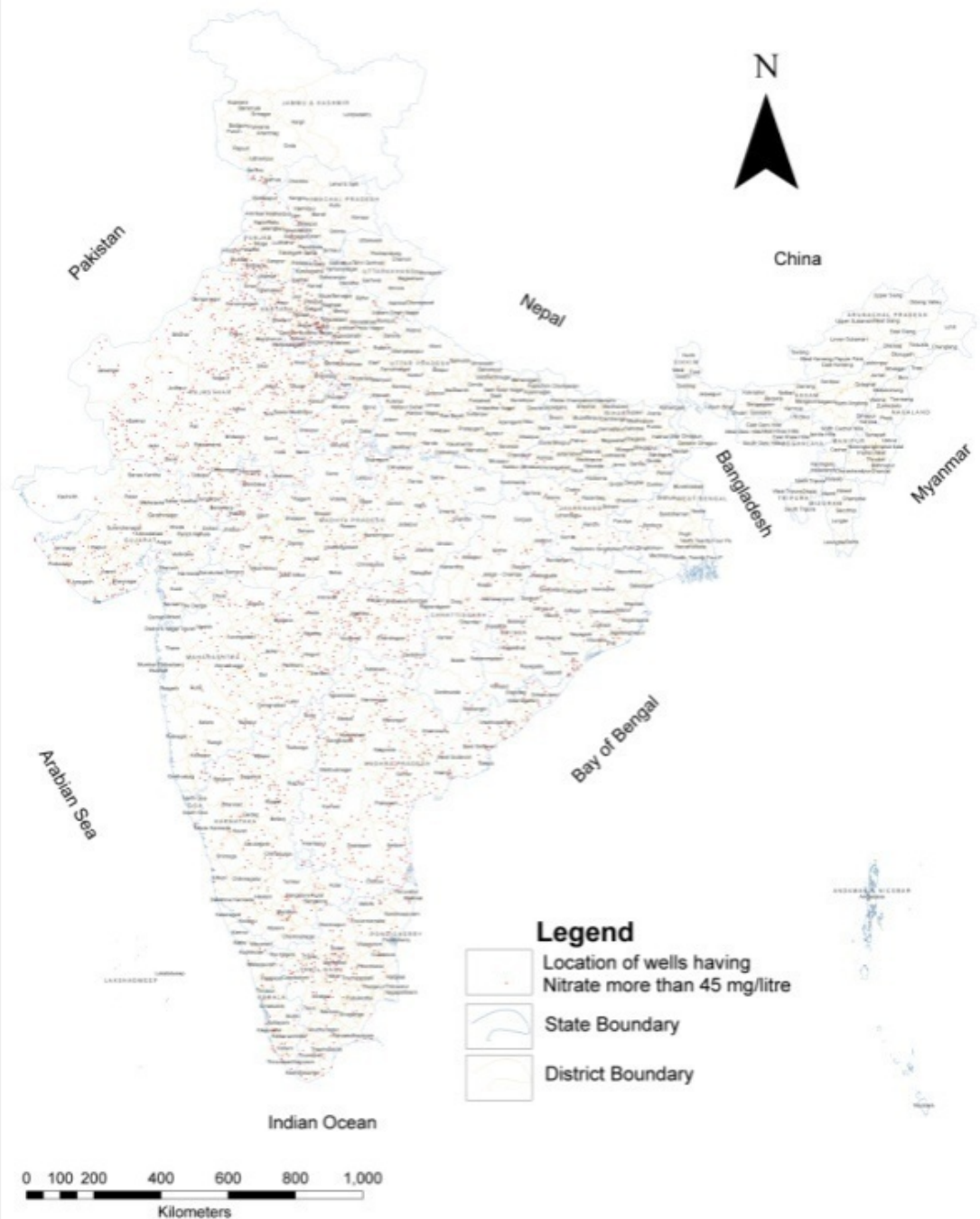
Thanks are due to Dr. P. K. Mehrotra, Director (WQ), Water Quality Division, Water Quality Assessment Authority for his valuable suggestions in respect of the report.

Regional Directors of the Regions and their team has made valuable contributions, providing the case studies and data as incorporated in the document, which could make the report more users oriented.

References:-

1. Babbitt, H.E., Doland, J.J., and Cleasby, J.L., “Water Supply Engineering,” McGraw hill, New York, 1962.
2. Bulusu, K.R. and Pande, S. P. (1990). Nitrates- A Serious Threat to Groundwater Pollution, Bhujal News Vol. 5, No. 2, April-June 1990, Special Issue on Ground Water Pollution, CGWB, Faridabad.
3. CGWB (2010) Ground Water Quality in Shallow Aquifers of India, Central Ground Water Board, Ministry of Water Resources, Govt. of India, Faridabad 2010.
4. Case studies from CGWB, SECR, Chennai, Tamil Nadu.
5. EPA Handbook, vol. 1: Ground Water and Contamination. September 1990. USEPA, Office of Research and Development, Washington DC.
6. Jain, P.K., and Tambe, J.A., 2001. Report on “Impact of Sewerage Pollution on Ground Water Quality in Jarud Town, Warud Taluka, Amravati District, Maharashtra”, CGWB, MOWR, Government of India, CR, Nagpur.
7. Subramanian, P. R. and Tiwari, A. N., 1999. Report on “Occurrence of Nitrate in Ground Water in Nagpur City Area”, CGWB, MOWR, Government of India, CR, Nagpur.
8. <http://extoxnet.orst.edu/faqs/safedrink/sewage.htm> as downloaded from internet.

NITRATE IN GROUND WATER (> 45 mg/litre)



Data Source: CGWB

Prepared under the Guidance of Shri B.M.Jha, Chairman, Central Ground Water Board, Ministry of Water Resources, Government of India

Annexure**Location having Nitrate >45 mg/l in Ground Water in different States**

Sl. No.	District	Block	Location	Nitrate (mg/l)
Andhra Pradesh				
1.	Adilabad	Dantalapally	Tandur	155
2.	Adilabad	Echoda	Echoda	102
3.	Adilabad	Gudihathur	Gudihantur	96
4.	Adilabad	Hajipur	Mancheriyal	264
5.	Adilabad	Hasnapur	Utnoor	133
6.	Adilabad	Jannaram	Jannaram	92
7.	Adilabad	Kalamadugu	Jannaram	245
8.	Adilabad	Khanapur	Khanapur	182
9.	Adilabad	Lakshettipeta-2	Lokeswaram	98
10.	Adilabad	Lolam	Dilawarpur	202
11.	Adilabad	Mamada	Mamada	70
12.	Adilabad	Manchirial	Mancheriyal	79
13.	Adilabad	Narsapur	Dilawarpur	88
14.	Adilabad	Palsi	Kubeer	50
15.	Adilabad	Pembi	Pembi	90
16.	Adilabad	Potaram	Mamada	153
17.	Adilabad	Rampuram	Bhimini	307
18.	Adilabad	Rebna1	Rebena	71
19.	Adilabad	Sitagondi	Adilabad	258
20.	Adilabad	Tandur	Tandur	227
21.	Adilabad	Tapalpur	Jannaram	162
22.	Anantapur	Adivi Brahmanapalli	Mudigubba	153
23.	Anantapur	Amidala	Uruvakonda	564
24.	Anantapur	Anantapur-alt-1	Anantapur	186
25.	Anantapur	Bontula Dinne1	Tadipatri	206
26.	Anantapur	Budipalli	Gudibanda	65
27.	Anantapur	Chilkamattur1	Chilkamattur	149
28.	Anantapur	D.cheruvu	N P Kunta	53
29.	Anantapur	Dharmavaram	Dharmavaram	255
30.	Anantapur	Gooty-alt	Gooty	100
31.	Anantapur	Gorantla	Gorantla	390
32.	Anantapur	Guntakal2	Guntakal	1110
33.	Anantapur	Ingaluru	O.D Cheruvu	626
34.	Anantapur	Kalyandurg-alt	Kalyandurg	76
35.	Anantapur	Korrapadu	B.Samudram	94
36.	Anantapur	Kothapalem	Rolla	178
37.	Anantapur	Kottacheruvu	Kottacheruvu	362
38.	Anantapur	Madakasira1	Madakasira	134
39.	Anantapur	Malakavemula-rs	Mudigubba	92
40.	Anantapur	Mamillakunta	Kothacheruvu	74

Sl. No.	District	Block	Location	Nitrate (mg/l)
41.	Anantapur	Mudigubba	Mudigubba	239
42.	Anantapur	Pargi	Parigi	46
43.	Anantapur	Penukonda	Penukonda	311
44.	Anantapur	Rayadurg-new	Rayadurg	282
45.	Anantapur	Rayalacheruvu	Rayalacheruvu	53
46.	Anantapur	Reddipalli	Nallamada	578
47.	Anantapur	Tanakal	Tanakal	231
48.	Anantapur	Vajrakarur	Vajrakarur	116
49.	Anantapur	Waddipalli	Atmakur	83
50.	Chittoor	Arogyavaram	Madanapalli	62
51.	Chittoor	C.kandriga	Narayanavanam	113
52.	Chittoor	Chinna panduru	V.Palem	191
53.	Chittoor	Kalakoda	Kalakoda	392
54.	Chittoor	Kallur	Pulicherla	232
55.	Chittoor	Mungilipattu	Chandragiri	286
56.	Chittoor	Nagalapuram-alt	Nagalapuram-alt	124
57.	Chittoor	Nimmapalli	Nimmapalli	62
58.	Chittoor	Panatoor	Gudipala	74
59.	Chittoor	Panjeri satram	Peddapanjani	92
60.	Chittoor	Puttur	Puttur	242
61.	Chittoor	Rangampeta	Chandragiri	49
62.	Chittoor	Shankrantipalli	Bangarupalem	110
63.	Chittoor	Somala	Somala	278
64.	Chittoor	Srikalahasti	Srikalahasti	148
65.	Chittoor	Tirupathi	Tirupathi	115
66.	Chittoor	Vadamalpet	Vadamalpet	242
67.	Chittoor	Venkatagirikota	Venkatagirikota	249
68.	Cuddapah	Anjaneya puram	Chakraipeta	210
69.	Cuddapah	Galiveedu-alt	Galiveedu-alt	313
70.	Cuddapah	Guvvalacheruvu	Ramapuram	234
71.	Cuddapah	Kondapuram(rs)	Kondapuram(rs)	311
72.	Cuddapah	Mallepalle	B.Matham	64
73.	Cuddapah	Nandyalampet	S.Maidukur	90
74.	Cuddapah	Nulivedu	Gulivedu	566
75.	Cuddapah	Pincha	T.Spalli	206
76.	Cuddapah	Settigunta	RlyKodur	118
77.	Cuddapah	Simhadripuram	Simhadripuram	65
78.	Cuddapah	Talamanchipatnam	Mylavaram	140
79.	Cuddapah	V.n.palle	V.n.palle	984
80.	Cuddapah	Vempalli	Vempalli	232
81.	Cuddapah	Venkatapuram	R.Choti	149
82.	East Godavari	Bikkavolu	Bikkavolu	94
83.	East Godavari	Gollaprolu	Gollaprolu	186

Sl. No.	District	Block	Location	Nitrate (mg/l)
84.	East Godavari	Maredumilli	Maredumilli	86
85.	East Godavari	Pattipadu	Pattipadu	155
86.	East Godavari	Pithapuram	Pithapuram	264
87.	East Godavari	Rajavommangi-alt	Rajavommangi-alt	194
88.	East Godavari	Rampachodavaram2	Rampachodavaram 2	115
89.	East Godavari	Uppada	Pithapuram	206
90.	East Godavari	Vegayammapeta	R.C.Puram	180
91.	East Godavari	Yanam	Tallrevu	66
92.	Guntur	Bellamkonda	Bellamkonda	279
93.	Guntur	Chebrolu	Chebrolu	219
94.	Guntur	Chilikaluripet-1	Chilikaluripet-1	136
95.	Guntur	Gurzala	Gurzala	272
96.	Guntur	Ipur	Ipur	476
97.	Guntur	Kondamodu	Rajupalem	360
98.	Guntur	Mandadi	Veldurti	379
99.	Guntur	Mangalagiri	Mangalagiri	180
100.	Guntur	Moolpur	Vemur	190
101.	Guntur	Murjampadu	Piduguralla	459
102.	Guntur	Narasaraopet	Narasaraopet	115
103.	Guntur	Nijampatnam	Nijampatnam	290
104.	Guntur	Obulesunipalle	Durgi	50
105.	Guntur	Pirangipuram	Pirangipuram	74
106.	Guntur	Ponnuru	Ponnuru	69
107.	Guntur	Rentachintala	Rentachintala	428
108.	Guntur	Repalle	Repalle	250
109.	Guntur	Srinagar	Dachepalli	190
110.	Guntur	Tummurukota	Rentachintala	360
111.	Guntur	Velpur(g.palem)	Savalyapuram	260
112.	Guntur	Vinukonda	Vinukonda	229
113.	Hyderabad	Langar House	Golkonda	69
114.	Hyderabad	Sheikpet	Sheikpet	190
115.	Karimnagar	Aruna konda-new	Choppadandi	122
116.	Karimnagar	Buswapuram I	Koheda	315
117.	Karimnagar	Dharmapuri-new	Dharmapuri-new	246
118.	Karimnagar	Garepalli	Kataram	107
119.	Karimnagar	Husnabad-1	Husnabad-1	90
120.	Karimnagar	Huzurabad	Husnabad-1	92
121.	Karimnagar	Jagityal-new	Jagityal-new	712
122.	Karimnagar	Kalwacherla	Kamanpur	77
123.	Karimnagar	Karimnagar	Karimnagar	75
124.	Karimnagar	Kothapalli-1	Dharmapuri-new	49
125.	Karimnagar	Kothapally	Dharmapuri-new	192

Sl. No.	District	Block	Location	Nitrate (mg/l)
126.	Karimnagar	Kothapet	Vengaltur	384
127.	Karimnagar	Koyyuru2	Tadicherla	105
128.	Karimnagar	Kudurupaka-alt	Bowenpalli	316
129.	Karimnagar	Mahadevpur	Mahadevpur	234
130.	Karimnagar	Manukonduru	Manukonduru	90
131.	Karimnagar	Mohanraopet1	Koratla	87
132.	Karimnagar	Mustafanagar	Gambhir raopeta	116
133.	Karimnagar	Osmannagar	Sultanbad	116
134.	Karimnagar	Tadikal	S.Patnam	85
135.	Karimnagar	Venkatapur	Manthani	181
136.	Khammam	Annapareddipalli	Chandrugonda	97
137.	Khammam	Annarugudem	Tallada	173
138.	Khammam	Dhammapeta	Dhammapeta	66
139.	Khammam	Edira	Venkatapuram	71
140.	Khammam	Gandhampally(Santulalp od)	Bayyaram	354
141.	Khammam	Garla	Garla	384
142.	Khammam	Jagannathapuram	Mulkalapalli	100
143.	Khammam	Kallur1	Kallur1	75
144.	Khammam	Kesavapuram	Palavancha	106
145.	Khammam	Konijarla	Konijarla	786
146.	Khammam	Kothalingala	Kamepalli	181
147.	Khammam	Kukkunur	Kukkunur	314
148.	Khammam	Lakshmipuram	Bhadrachalam	123
149.	Khammam	Madira	Madira	56
150.	Khammam	Manuguru	Manuguru	150
151.	Khammam	Nayakangudem1	Kusumanchi	692
152.	Khammam	Nehrunagar	Yellandu	78
153.	Khammam	Sujatanagaram	Kothagudem	169
154.	Khammam	Tegad	Cherla	131
155.	Khammam	Thotapally	Bhadrachalam	147
156.	Khammam	Yerupalem	Yerupalem	282
157.	Krishna	Bantumilli1	Pedana	169
158.	Krishna	Gampalagudem	Gampalagudem	244
159.	Krishna	Garikapadu	Jaggayapeta	285
160.	Krishna	Gopalapuram	A.Konduru	100
161.	Krishna	Gudivada	Gudivada	73
162.	Krishna	K.agraharam	Jaggayapeta	160
163.	Krishna	K.cherla-alt	K.cherla-alt	155
164.	Krishna	Kaikaluru2	Kaikaluru2	84
165.	Krishna	Kummarkuntla	A.Konduru	106
166.	Krishna	Munjuluru	Bantumilli	156
167.	Krishna	Nuzivedu	Nuzivedu	250

Sl. No.	District	Block	Location	Nitrate (mg/l)
168.	Krishna	Tiruvur1	Tiruvur1	120
169.	Krishna	Upparagudem	Mudinapalli	52
170.	Kurnool	Ahobilam	Alagadda	64
171.	Kurnool	Battulur	Alagadda	102
172.	Kurnool	Gonegondla	Gonegondla	290
173.	Kurnool	Kodumuru1	Kodumuru1	381
174.	Kurnool	Madhavaram	Mantralayam	705
175.	Kurnool	Mantralayam-new	Mantralayam-new	290
176.	Kurnool	Moravakonda	Moravakonda	316
177.	Kurnool	Nandikotkur	Nandikotkur	248
178.	Kurnool	Nossam	Vyyalavada	95
179.	Kurnool	Orvakallu	Orvakallu	122
180.	Kurnool	Peapally1	Peapally1	644
181.	Kurnool	Veldurti	Veldurti	50
182.	Kurnool	Yenugumarri	Piepally	90
183.	Mahbubnagar	Alampur1	Alampur1	74
184.	Mahbubnagar	Amangal1	Amangal1	434
185.	Mahbubnagar	Bandrapal	C.Ckunta	147
186.	Mahbubnagar	Bongkur	Manopad	180
187.	Mahbubnagar	Damargidda	Damargidda	90
188.	Mahbubnagar	Dhanwada1	Dhanwada1	160
189.	Mahbubnagar	Dharur	Dharur	95
190.	Mahbubnagar	Gadwal	Gadwal	133
191.	Mahbubnagar	Goka paslabad	Daulatabad	400
192.	Mahbubnagar	Gundimal	Kosagi	279
193.	Mahbubnagar	Jatpol	Wgandla	400
194.	Mahbubnagar	Kancharaopalli	Pebair	140
195.	Mahbubnagar	Kollapur	Kollapur	250
196.	Mahbubnagar	Krishna	Manganur	790
197.	Mahbubnagar	Maddur	Maddur	250
198.	Mahbubnagar	Metlakunta	B.Pet	59
199.	Mahbubnagar	Nawabpet	Nawabpet	112
200.	Mahbubnagar	Peddakottapalle	Peddakottapalle	480
201.	Mahbubnagar	Ravalpalle	Kondangal	60
202.	Mahbubnagar	Srirangapuram	Pebair	400
203.	Mahbubnagar	Vattivelipalli	Amarabad	245
204.	Mahbubnagar	Velgonda	W.gandla	100
205.	Mahbubnagar	Y.chowrasta	Itikala	400
206.	Medak	Ghatpalli	Alldurg	157
207.	Medak	Kothur	Munipalli	143
208.	Medak	Nandigama2	Ramayampet	124
209.	Medak	Narayankher	Chegunta	347
210.	Medak	Narsingi	Narsingi	440

Sl. No.	District	Block	Location	Nitrate (mg/l)
211.	Medak	Nayalkal-ii	Nayalkal-ii	59
212.	Medak	Patancheruvu1	Patancheruvu1	89
213.	Medak	Peroor	Medak	74
214.	Medak	Sadasivapet1	Sadasivapet1	84
215.	Medak	Shankerampet	Shankerampet	154
216.	Medak	Waddiaram1	Chegunta	149
217.	Nalgonda	A.ramannagudem	Suryapet	70
218.	Nalgonda	Damarcherla1	Damarcherla2	121
219.	Nalgonda	Devarakonda	Devarakonda	334
220.	Nalgonda	Huzurnagar1	Huzurnagar2	244
221.	Nalgonda	Kethupally	Kethupally	322
222.	Nalgonda	Kodad-new	Kodad-new	62
223.	Nalgonda	Kondaprolu	Damarcherla2	1300
224.	Nalgonda	Munagala	Munagala	120
225.	Nalgonda	Nalgonda-2	Nalgonda-3	300
226.	Nalgonda	Nidamanuru	Nidamanuru	276
227.	Nalgonda	Pochampalli	Pochampalli	348
228.	Nalgonda	Yadgirigutta	Yadgirigutta	192
229.	Nellore	Atmakur	Atmakur	144
230.	Nellore	Dachuru	Kalvaya	182
231.	Nellore	Durgarajapatnam	Vakad	67
232.	Nellore	Eruru	Chilakur	107
233.	Nellore	Gudur	Gudur	174
234.	Nellore	Kavali	Kavali	89
235.	Nellore	Kondapuram	Kondapuram	302
236.	Nellore	Kovvuru	Kovvuru	166
237.	Nellore	Muthukuru -alt	Muthukuru -alt	247
238.	Nellore	North rajupalem	Buchireddypalem	67
239.	Nellore	Penubarti	Rapur2	287
240.	Nellore	Ramateertham	Vidhavalur	190
241.	Nellore	Rapur2	Rapur2	183
242.	Nellore	Sullurpet	Sullurpet	82
243.	Nellore	Sunnapubatti	Sunnapubatti	90
244.	Nellore	Tada	Tada	143
245.	Nellore	Tikkavaram	Chillakur	60
246.	Nellore	Udayagiri	Udayagiri	90
247.	Nellore	Venkatagiri	Venkatagiri	189
248.	Nellore	Vidhyanagar	Chilkur	75
249.	Nizamabad	Balkonda	Balkonda	74
250.	Nizamabad	Banswada	Banswada	102
251.	Nizamabad	Bheemgal	Bheemgal	148
252.	Nizamabad	Janakampet	Janakampet	74
253.	Nizamabad	Mamidipalli	Maklur	224

Sl. No.	District	Block	Location	Nitrate (mg/l)
254.	Nizamabad	Mohammad Nagar	Pitlam	136
255.	Nizamabad	Nasurallabad	Bikanur	160
256.	Nizamabad	Thadwai	Thadwai	180
257.	Prakasam	Addanki-new	Addanki-new	143
258.	Prakasam	Ballipalli	Knigiri	78
259.	Prakasam	Botla Gudur	Pamar	78
260.	Prakasam	C.s.puram	C.s.puram	248
261.	Prakasam	Chandalur	Darsi	149
262.	Prakasam	Chimakurti	Chimakurti	65
263.	Prakasam	Chirala	Chirala	124
264.	Prakasam	Darsi-new	Darsi-new	310
265.	Prakasam	Donakonda	Donakonda	372
266.	Prakasam	Giddaluru	Giddaluru	47
267.	Prakasam	Gollapalli	Tripurantakam	372
268.	Prakasam	Guttalaumadivrm	Tripurantakam	744
269.	Prakasam	Kadavakuduru	C.Ganjam	422
270.	Prakasam	Kandukur	Kandukur	260
271.	Prakasam	Kanigiri	Kanigiri	47
272.	Prakasam	Komarolu	Komarolu	124
273.	Prakasam	Malakonda	V.Palem	93
274.	Prakasam	Muppavaram	Ponnaluru	78
275.	Prakasam	Nagireddipalem	Ponnaluru	155
276.	Prakasam	Narzamala Tanda	Pullacheruvu	186
277.	Prakasam	Ongole-new	Ongole-new	84
278.	Prakasam	Pasupugallu	Munalamuru	68
279.	Prakasam	Peddarikatla-alt	K.Metla	78
280.	Prakasam	Podili	Podili	341
281.	Prakasam	Rajupalem	Rajupalem	71
282.	Prakasam	Santamaguluru	Santamaguluru	465
283.	Prakasam	Tangutur	Tangutur	620
284.	Prakasam	Turumella	Kambam	465
285.	Prakasam	Uppugundur	Uppugundur	103
286.	Prakasam	Vellampalli	Vellampalli	806
287.	Prakasam	Vengaihpalem	Kuruchedu	155
288.	Ranga Reddy	Antaram (c)	Shabad	200
289.	Ranga Reddy	Bashirabad1	Bashirabad1	61
290.	Ranga Reddy	Bata singaram	Hyatnagar	297
291.	Ranga Reddy	Chimaldarri	Mominpet	120
292.	Ranga Reddy	Chintal	Malkajgiri	120
293.	Ranga Reddy	Ghatkesar2	Ghatkesar2	141
294.	Ranga Reddy	Inoli	Tandur	67
295.	Ranga Reddy	Kotepally (new)	Kotepally (new)	200
296.	Ranga Reddy	Peddumul	Peddumul	120

Sl. No.	District	Block	Location	Nitrate (mg/l)
297.	Ranga Reddy	Rajendranagar	Rajendranagar	146
298.	Ranga Reddy	Shankarapally	Shankarapally	148
299.	Srikakulam	Chilakalapalem (new)	Icharla	152
300.	Srikakulam	Heeramandalam	Heeramandalam	80
301.	Srikakulam	Ichapuram	Ichapuram	230
302.	Srikakulam	Kotturu	Kotturu	82
303.	Srikakulam	Narasannapeta	Narasannapeta	112
304.	Srikakulam	Ponduru	G.Singadam	118
305.	Srikakulam	Tekkalipatnam	Palasa	188
306.	Visakhapatnam	Addaroddu	Rayavaram	103
307.	Visakhapatnam	Bangarumitta	B.Peta	46
308.	Visakhapatnam	Bhimunipatnam-2	Bhimunipatnam-2	396
309.	Visakhapatnam	Desapatrunipalm	Parvada	228
310.	Visakhapatnam	Gandhigramam	Chodavaram	286
311.	Visakhapatnam	Gurrajupeta	Rayavaram	64
312.	Visakhapatnam	Haripalem	Acchutapuram	122
313.	Visakhapatnam	Kotauratla	Kotauratla	262
314.	Visakhapatnam	Madugula	Madugula	256
315.	Visakhapatnam	Mindivanipalem	Pendurthi	143
316.	Visakhapatnam	Pata K.d.peta	Golgonda	80
317.	Visakhapatnam	Pudimadaka	Acchutapuram	236
318.	Visakhapatnam	Purshotta Puram-alt2	Elamanchili	145
319.	Visakhapatnam	Revupolavaram	Rayavaram	264
320.	Visakhapatnam	Rolugunta 1	Rolugunta 1	141
321.	Visakhapatnam	Sabbavaram	Sabbavaram	164
322.	Visakhapatnam	Shriharipuram	Visakhapatnam	84
323.	Visakhapatnam	Tallapalem	Kasimkota	129
324.	Visakhapatnam	Vishakapatnam-2	Vishakapatnam-2	81
325.	Vizianagaram	Agraharam	Tayarlam	94
326.	Vizianagaram	Bobbili	Bobbili	125
327.	Vizianagaram	Garbham	M.Mudiyam	104
328.	Vizianagaram	Gumma	Kurpam	124
329.	Vizianagaram	Komarada	Komarada	48
330.	Vizianagaram	Kurupana	Kurupana	182
331.	Vizianagaram	Natavalasa	Denkada	124
332.	Vizianagaram	Parvatipuram 1	Parvatipuram 1	88
333.	Vizianagaram	Payakapadu	Makkua	175
334.	Vizianagaram	Rajapulova	Denkada	115
335.	Vizianagaram	Ramabhadrapuram	Ramabhadrapuram	66
336.	Vizianagaram	Vijayanagaram	Vijayanagaram	53
337.	Warangal	Alimpuram	Bachannapet	330
338.	Warangal	Cherial	Cherial	160
339.	Warangal	Ingurti	Nekonda	490

Sl. No.	District	Block	Location	Nitrate (mg/l)
340	Warangal	Ippagudem	Ghanapur	712
341	Warangal	Kamalapuram-new	Mangampet	100
342	Warangal	Kazipet-alt	Hanumakonda	100
343.	Warangal	Kesamudram	Kesamudram	87
344.	Warangal	Mahabubabad	Mahabubabad	299
345.	Warangal	Mallampalli	Mulugu	82
346.	Warangal	Marrimustala	Chittiyal	80
347.	Warangal	Mylaram	Rayaparthi	80
348	Warangal	Palakurthi	Palakurthi	142
349	Warangal	Pedda Pendyal	Dharmasagar	80
350	West Godavari	Attili-B	Attili-B	226
351	West Godavari	Erraguntlapalli	Chinnalapudi	83
352.	West Godavari	Koyyalagudem	Koyyalagudem	53
353.	West Godavari	Narsapuram	Narsapuram	71
354.	West Godavari	Pragadavaram	Chintalapudi	64
355.	West Godavari	Tadipudi I	Polavaram	165
Bihar				
1.	Aurangabad	Aurangabad	Aurangabad	220
2.	Aurangabad	Madanpur	Madanpur	51
3.	Banka	Banka	Banka	48
4.	Banka	Bausi	Baunsi	109
5.	Bhagalpur	Colgong	Ghoga	178
6.	Bhojpur	Jagdishpur	Jagdishpur	76
7.	Kaimur(Bhabua)	Chainpur	Chainpur	154
8.	Kaimur(Bhabua)	Chand	Chand	77
9.	Kaimur(Bhabua)	Mohania	Mohania	79
10.	Patna	Fatwah	Mokama	228
11.	Rohtas	Chenari	Chenari	92
12.	Rohtas	Sasaram	Sasaram	86
13.	Rohtas	Bikramganj	Bikramganj	78
14.	Saran	Sonepur	Nayagram	110
15.	Siwan	Mairwa	Jeradei	80
Chhattisgarh				
1.	Bastar	Jagdalpur	Jagdalpur	49
2.	Bastar	Makri	Makri	48
3.	Bilaspur	Kota	Jhingatpur	51
4.	Bilaspur	Lormi	Chhaparwa	65
5.	Bilaspur	Murwahi	Danikundi	91
6.	Dantewada	Katekalyan	Kukanar	56
7.	Dantewada	Sukma	Sukma	51
8.	Dhamtari	Kurud	Marod	102
9.	Dhamtari	Magarlod	Magarlod	47
10.	Jashpur	Bagicha	Sanna	65

Sl. No.	District	Block	Location	Nitrate (mg/l)
11.	Jashpur	Duldula	Kunjara	70
12.	Jashpur	Kunkuri	Kunkuri	100
13.	Jashpur	Pathalgaon	Ludeg	90
14.	Jashpur	Pathalgaon	Pathalgaon	160
15.	Kanker	Bhanupratppur	Kachhe	59
16.	Kanker	Kanker	Markatola l	47
17.	Kanker	Narharpur	Narharpur	52
18.	Kawardha	Pandariya	Kui	70
19.	Kawardha	Pandariya	Munmuna	80
20.	Korba	Kathghora	Gopalpur	45
21.	Korba	Kathghora	Katghora	49
22.	Korba	Pondi	Morga	135
23.	Korba	Pondi	Pasan	95
24.	Mahasamund	Mahasamund	Tumgaon	50
25.	Raigarh	Baramkela	Bonda	63
26.	Raigarh	Dharamjaigarh	Bakaruma	51
27.	Raigarh	Dharamjaigarh	Sirsinga	65
28.	Raigarh	Dharamjaigarh	Sirsinga	85
29.	Raigarh	Gharghoda	Gharghoda	240
30.	Raigarh	Lailunga	Rajpur2	51
31.	Raipur	Bhatapara	Tarenga	87
32.	Raipur	Bilaigarh	Sarsiwa	130
33.	Raipur	Deobhog	Deobhog	60
34.	Raipur	Deobhog	Deobhog	45
35.	Raipur	Dharsiwa	Devpuri	60
36.	Raipur	Dharsiwa	Manabasti	70
37.	Raipur	Dharsiwa	Mandirhasud	85
38.	Raipur	Gariyaband	Dhawalpur	50
39.	Raipur	Kasdol	Haswa	120
40.	Raipur	Kasdol	Lawan	67
41.	Raipur	Rajim	Rajim	65
42.	Rajnandgaon	Dongargarh	Dongargarh	46
43.	Rajnandgaon	Manpur	Manpur	46
Delhi				
1.	Central Delhi	Central Delhi	Parsidharamsala Dw	75
2.	New Delhi	New Delhi	India gate	60
3.	New Delhi	New Delhi	Kidwai Nagar Pz	68
4.	North Delhi	North Delhi	ISBT (Kashmiri Gate)	66
5.	North West Delhi	North West Delhi	Bakhtawarpur	91
6.	North West Delhi	North West Delhi	Hareoli	74
7.	North West Delhi	North West Delhi	Inderlok Temp	128

Sl. No.	District	Block	Location	Nitrate (mg/l)
			well	
8.	North West Delhi	North West Delhi	Mubarakpur	218
9.	North West Delhi	North West Delhi	Puthkalan	107
10.	South Delhi	South Delhi	Chattarpur Temple	140
11.	South Delhi	South Delhi	Fatehpur Beri Pz	61
12.	South Delhi	South Delhi	Gadaipur Pz	50
13.	South Delhi	South Delhi	Indira Nagar Pz	54
14.	SouthWest Delhi	SouthWest Delhi	Airport Boundary	75
15.	SouthWest Delhi	SouthWest Delhi	Airport Nursury	70
16.	SouthWest Delhi	SouthWest Delhi	Chawla	136
17.	SouthWest Delhi	SouthWest Delhi	Dichaon Kalan	83
18.	SouthWest Delhi	SouthWest Delhi	Kair	62
19.	SouthWest Delhi	SouthWest Delhi	Tagore Garden	61
20.	West Delhi	West Delhi	Nangloi	97
21.	West Delhi	West Delhi	Peeragarhi	47
22.	West Delhi	West Delhi	Tikri Kalan	126
23.	West Delhi	West Delhi	Tilangpur Kotla Dw	84
Gujarat				
1.	Ahmedabad	Dhandhuka	Devalia	138
2.	Ahmedabad	Dhandhuka	Dhandhuka1	59
3.	Ahmedabad	Mandal	Dalod	150
4.	Ahmedabad	Mandal	Mandal2	80
5.	Ahmedabad	Ranpur	Rajpada	520
6.	Ahmedabad	Viramgam	Kumarkhan	120
7.	Amreli	Amreli	Govadka	169
8.	Amreli	Babra	Devaliya	126
9.	Amreli	Babra	Untvad	182
10.	Amreli	Bagasara	Bagasara	217
11.	Amreli	Dhari	Chalala	106
12.	Amreli	Dhari	Dhari	105
13.	Amreli	Jafrabad	Lotpur	104
14.	Amreli	Jafrabad	Nageshri	270
15.	Amreli	Jafrabad	Timbi2	138
16.	Amreli	Khambha	Vankiya1	120
17.	Amreli	Kundla-Savar	Badhda	380
18.	Amreli	Kundla-Savar	Bhuva	86
19.	Amreli	Kundla-Savar	Goradka	320
20.	Amreli	Kunkavav-Vadia	Kunkavav	190
21.	Amreli	Lathi	Tajpur	219
22.	Amreli	Rajula	Mandal	147
23.	Anand	Petlad	Dharmaj	53
24.	Banaskantha	Danta	Ratanpur2	120

Sl. No.	District	Block	Location	Nitrate (mg/l)
25.	Banaskantha	Tharad	Bharol1	190
26.	Banaskantha	Tharad	Khoda	210
27.	Banaskantha	Tharad	Vadgamda	200
28.	Bharuch	Jambusar	Bhadkodra	380
29.	Bharuch	Jambusar	Kavi	840
30.	Bhavnagar	Botad	Paliyad2	123
31.	Bhavnagar	Botad	Tardhera	109
32.	Bhavnagar	Gariadhar	Gariyadhar	128
33.	Bhavnagar	Ghogha	Ghogha	515
34.	Bhavnagar	Ghogha	Tansa	392
35.	Bhavnagar	Mahuva	Dudhala	116
36.	Bhavnagar	Mahuva	Mahuva1	70
37.	Bhavnagar	Mahuva	Shantinagar	140
38.	Bhavnagar	Palitana	Khijadiya	48
39.	Bhavnagar	Sihor	Ambala	161
40.	Bhavnagar	Umrala	Bhutia	186
41.	Bhavnagar	Umrala	Jalia	180
42.	Bhavnagar	Umrala	Porbada	118
43.	Bhavnagar	Umrala	Timbi2	100
44.	Dohad	Garbada	Garbara	460
45.	Jamnagar	Bhanvad	Ambardi	230
46.	Jamnagar	Bhanvad	Mota kalawad	110
47.	Jamnagar	Jamjodhpur	Balwa	165
48.	Jamnagar	Jamjodhpur	Seth vadala	390
49.	Jamnagar	Jamnagar	Moti khavdi	190
50.	Jamnagar	Kalavad	Kalawad	130
51.	Jamnagar	Kalavad	Moti matli	120
52.	Jamnagar	Kalavad	Nikava	215
53.	Jamnagar	Kalyanpur	Bhogat1	56
54.	Jamnagar	Kalyanpur	Khirsara	165
55.	Jamnagar	Khambhalia	Vadtara	175
56.	Jamnagar	Okhamandal	Dwarka	165
57.	Jamnagar	Okhamandal	Varwada	75
58.	Junagadh	Junagadh	Bilkha	255
59.	Junagadh	Junagadh	Junagadh1	115
60.	Junagadh	Kodinar	Dolasa	150
61.	Junagadh	Mangrol	Antroli	50
62.	Junagadh	Mangrol	Bamanwara	125
63.	Junagadh	Mangrol	Kalej	170
64.	Junagadh	Mangrol	Sepa	120
65.	Junagadh	Mangrol	Sil	240
66.	Kachchh	Abdasa	Mothala	60
67.	Kachchh	Abdasa	Naliya1	50

Sl. No.	District	Block	Location	Nitrate (mg/l)
68.	Kachchh	Rapar	Gagodar	45
69.	Kachchh	Rapar	Lilpur	48
70.	Kachchh	Rapar	Rapar2	48
71.	Kheda	Mahuda	Mahuda	64
72.	Mahesana	Becharaji	Dharpura	60
73.	Mahesana	Kadi	Vidaj	60
74.	Narmada	Tilakwada	Namaria	110
75.	Navsari	Jalalpore	Chinam	60
76.	Panchmahals	Ghoghamba	Ranipura	180
77.	Panchmahals	Morwa (Hada)	Santroa	165
78.	Panchmahals	Shehera	Shehera	380
79.	Patan	Patan	Patan2	75
80.	Patan	Radhanpur	Radhanpur2	120
81.	Porbandar	Kutiyana	Kutiyana1	135
82.	Porbandar	Porbandar	Bhavpura	105
83.	Porbandar	Ranavav	Kandorna	105
84.	Rajkot	Dhoraji	Dhoraji1	200
85.	Rajkot	Gondal	Chordi	110
86.	Rajkot	Gondal	Dadia	155
87.	Rajkot	Gondal	Gogavadar	230
88.	Rajkot	Gondal	Kalithad	190
89.	Rajkot	Gondal	Mota dadwa	110
90.	Rajkot	Jamkandorna	Jasapur	200
91.	Rajkot	Jasdan	Viranagar	90
92.	Rajkot	Paddhari	Movaiya	110
93.	Rajkot	Rajkot	Halenda	115
94.	Rajkot	Tankara	Chhatar	120
95.	Rajkot	Tankara	Hadmatia	120
96.	Rajkot	Tankara	Neknam	110
97.	Sabarkantha	Himatnagar	Gadha1	90
98.	Sabarkantha	Himatnagar	Varvada	174
99.	Sabarkantha	Idar	Revas	192
100.	Sabarkantha	Khedbrahma	Matoda	186
101.	Sabarkantha	Khedbrahma	Silwad	128
102.	Sabarkantha	Modasa	Modasa2	130
103.	Sabarkantha	Vadali	Wadali	128
104.	Surat	Mangrol	Dungri	110
105.	Surendranagar	Dasada	Adriyana	280
106.	Surendranagar	Dhrangadhra	Ratanpur1	85
107.	Surendranagar	Halvad	Sukhpar1	160
108.	Surendranagar	Limbdi	Shiyani	85
109.	Surendranagar	Muli	Muli	85
110.	Surendranagar	Sayla	Dhandhalpur	90

Sl. No.	District	Block	Location	Nitrate (mg/l)
111.	Vadodara	Chhota Udaipur	Jojh	105
112.	Vadodara	Vaghodia	Saidal	330
Himachal Pradesh				
1.	Una	Amb	Daulatpur	65
2.	Una	Una	Badshera	45
3.	Una	Una	Ishpur	55
4.	Una	Una	Jalehra	45
Haryana				
1.	Ambala	Barara	Mulana	55
2.	Ambala	Naraingarh	Kurali	99
3.	Bhiwani	Badhra	Gopi	147
4.	Bhiwani	Bawani Khera	Dhanana	54
5.	Bhiwani	Bhiwani	Badala	570
6.	Bhiwani	Dadri-Ii	Dadri	600
7.	Bhiwani	Dari-Ii	Chirya	180
8.	Bhiwani	Kairu	Hetampur	48
9.	Bhiwani	Kairu	Isharwal	158
10.	Bhiwani	Kairu	Lohani	180
11.	Bhiwani	Loharu	Kashikalan	260
12.	Bhiwani	Loharu	Loharu	74
13.	Bhiwani	Siwani	Jhumpa	1200
14.	Bhiwani	Siwani	Miran	57
15.	Bhiwani	Siwani	Siwani	300
16.	Bhiwani	Tosham	Bajina	238
17.	Faridabad	Hodal	Bamnikhera	116
18.	Fatehabad	Bhuna	Jandli Kalan	87
19.	Fatehabad	Tohana	Naggal	55
20.	Fatehabad	Tohana	Samain	60
21.	Fatehabad	Tohana	Tohana	104
22.	Fatehabad	Uklana	Uklana	140
23.	Gurgaon	F.P.Zhirka	Firozpur Jhirka	55
24.	Gurgaon	Nagina	Nagina	135
25.	Gurgaon	Pataudi	Bilaspur	98
26.	Gurgaon	Sohana	Lalakheri	536
27.	Hisar	Agroha	Kaliravan	185
28.	Hisar	Agroha	Samani	50
29.	Hisar	Barwala	Kirori	124
30.	Hisar	Hansi	Chanaut	165
31.	Hisar	Hansi	Dhamundicross	120
32.	Hisar	Hisar-I	Dhansu	167
33.	Hisar	Hisar-I	Hissar	128
34.	Hisar	Hisar-I	Mirka	152
35.	Hisar	Hisar-Ii	Narnaund	165

Sl. No.	District	Block	Location	Nitrate (mg/l)
36.	Jhajjar	Bahadurgarh	Badli	57
37.	Jhajjar	Bahadurgarh	Chhara	264
38.	Jhajjar	Beri	Dubhaldhan	51
39.	Jhajjar	Jhajjar	Yaqubpur	142
40.	Jhajjar	Matanhail	Chuchakwas	63
41.	Jind	Jind	Chhabri	51
42.	Jind	Julana	Lajwana Kalan	83
43.	Jind	Narwana	Kharwal	67
44.	Jind	Uchana	Kachhana	105
45.	Kaithal	Kaithal	Guhna	129
46.	Kaithal	Kaithal	Peoda	78
47.	Kaithal	Kalayat	Mataur	98
48.	Kaithal	Pundri	Jateri	81
49.	Kaithal	Pundri	Tik	169
50.	Kaithal	Rajaund	Rajaund	55
51.	Karnal	Assandh	Kherisharafali	55
52.	Karnal	Assandh	Salwan	98
53.	Kurukshetra	Kurukshetra	Kheri Dabdalan	210
54.	Mahendragarh	Ateli	Kanti Khas	85
55.	Mahendragarh	Kanina	Buchawas	250
56.	Mahendragarh	Narnaul	Narnaul	1270
57.	Panchkula	Barwala	Barwala	60
58.	Panchkula	Raipur Rani	Kakar Majra	98
59.	Panipat	Israna	Khalila Manjra	68
60.	Panipat	Madlauda	Khandra	86
61.	Panipat	Panipat	Sewah	90
62.	Rewari	Bawal	Balawas	124
63.	Rewari	Bawal	Bawal	192
64.	Rewari	Bawal	Karnawas	63
65.	Rewari	Khol	Atela	108
66.	Rewari	Nahar	Bahu	69
67.	Rewari	Nahar	Kosli	49
68.	Rewari	Rewari	Sangwari	63
69.	Rohtak	Kalanaur	Kalanaur	765
70.	Rohtak	Meham	Madina	300
71.	Rohtak	Meham	Mahem	135
72.	Rohtak	Meham	Nidhana	1292
73.	Rohtak	Rohtak	Rohtak	78
74.	Rohtak	Rohtak	Samargopalpur	760
75.	Rohtak	Sampla	Hassangarh	218
76.	Sirsa	Baragudha	Alikan	117
77.	Sirsa	Baragudha	Farwain	80
78.	Sirsa	Baragudha	Rori	55

Sl. No.	District	Block	Location	Nitrate (mg/l)
79.	Sirsa	Dabwali	Chotala	121
80.	Sirsa	Dabwali	Dabwali	126
81.	Sirsa	Dabwali	Ganga	131
82.	Sirsa	Dabwali	Khuiyan	123
83.	Sirsa	Dabwali	Manjiyana	128
84.	Sirsa	Dabwali	Mastian	130
85.	Sirsa	Dabwali	Rasalia Khera	158
86.	Sirsa	Dabwali	Saktakhara	120
87.	Sirsa	Ellenabad	Chilkani Dhab	175
88.	Sirsa	Ellenabad	Ellenabad	98
89.	Sirsa	Ellenabad	Karamsana	95
90.	Sirsa	Nathusari Chopr	Ding	150
91.	Sirsa	Nathusari Chopr	Ghushiana	125
92.	Sirsa	Nathusari Chopr	Jamal	157
93.	Sirsa	Odhan	Chormar	55
94.	Sirsa	Odhan	Hasu	90
95.	Sonipat	Gohana	Barota	71
96.	Sonipat	Kharkhauda	Kharkhauda	76
97.	Sonipat	Mundlana	Bichpuri	492
98.	Sonipat	Mundlana	Butana	116
99.	Sonipat	Sonipat	Barwasni	109
100.	Sonipat	Sonipat	Bohela	55
101.	Sonipat	Sonipat	Pinana	56
102.	Yamuna Nagar	Radaur	Radaur	98
Jammu & Kashmir				
1.	Jammu	Bisnah	Arnia	85
2.	Jammu	Bisnah	Bishnah	125
3.	Jammu	Bisnah	Salehar	100
4.	Jammu	Samba	Bengular	90
5.	Jammu	Samba	Daboh	50
6.	Jammu	Samba	Nagrota	47
7.	Jammu	Samba	Nandpur	90
8.	Jammu	Samba	Samba	150
9.	Kathua	Billawar	Nagrota-gujroo	103
10.	Kathua	Hiranagar	Dulme Chak	65
11.	Kathua	Hiranagar	Jandi	45
12.	Kathua	Hiranagar	Konthal	60
13.	Kathua	Hiranagar	Kootah	46
Jharkhand				
1.	Chatra	Itkhor	Itkhor	104
2.	Chatra	Simaria	Bagra	66
3.	Chatra	Simaria	Bagra	67
4.	Chatra	Simaria	Simaria	138

Sl. No.	District	Block	Location	Nitrate (mg/l)
5.	Chatra	Tandwa	Tandwa	67
6.	Garhwa	Bhawanathpur	Bhawanathpur	115
7.	Godda	Boarijor	Lalmatia	51
8.	Godda	Sundar Pahari	Sundar Pahari	46
9.	Gumla	Gumla	Gumla	133
10.	Gumla	Kamdara	Baisia	76
11.	Gumla	Simdega	Bishnupur	53
12.	Gumla	Sisai	Sisai	134
13.	Lohardaga	Kuru	Kuru	78
14.	Pakaur	Litipara	Litipara	130
15.	Palamu	Daltonganj	Daltonganj	119
16.	Palamu	Latehar	Latehar	46
17.	Palamu	Manika	Manika	121
18.	Palamu	Patan	Patan	47
19.	Pashchimi Singhbhum	Adityapur (Gamharia)	Kandra	230
20.	Pashchimi Singhbhum	Bandgaon	Bandgaon	56
21.	Pashchimi Singhbhum	Chakradharpur	Chakradharpur	59
22.	Pashchimi Singhbhum	Chandil	Chandil	101
23.	Pashchimi Singhbhum	Jhinkpani	Jhinkpani	150
24.	Pashchimi Singhbhum	Seraikela	Seraikela	95
25.	Purbi Singhbhum	Chakulia	Chakulia	128
26.	Purbi Singhbhum	Golmuri Cum Jugsalai	Sundarnagar	84
27.	Ranchi	Bundu	Karapurti	65
28.	Ranchi	Karra	Karra	58
29.	Ranchi	Mandar	Mandar	50
30.	Sahibganj	Borio	Borio	65
31.	Sahibganj	Borio	Sakrigali	61
32.	Sahibganj	Rajmahal	Taljhari	46
Karnataka				
1.	Bagalkot	Badami	Patadkal	61
2.	Bagalkot	Bagalkot	Bevur	64
3.	Bagalkot	Bagalkot	Sirur	179
4.	Bagalkot	Beelagi	Bilgi	74
5.	Bagalkot	Hunugunda	Amingarh	146
6.	Bagalkot	Hunugunda	Ilkal	180
7.	Bagalkot	Hunugunda	Kodihal	140
8.	Bagalkot	Hunugunda	Nandwadige	55

Sl. No.	District	Block	Location	Nitrate (mg/l)
9.	Bagalkot	Hunugunda	Tumb	48
10.	Bagalkot	Jamakhandi	Algur	1420
11.	Bagalkot	Jamakhandi	Kavatgi	53
12.	Bagalkot	Jamakhandi	Savalgi	66
13.	Bagalkot	Mudhol	Malapura	90
14.	Bangalore	Anekal	Anekal	145
15.	Bangalore	Bangalore North	Bangalore I	48
16.	Bangalore	Bangalore North	Hebbal	67
17.	Bangalore	Devanahalli	Avathi	175
18.	Bangalore	Devanahalli	Viswanathapura	109
19.	Bangalore	Doddaballapura	Gollahalli	47
20.	Bangalore	Doddaballapura	Siddanaikanahalli	97
21.	Bangalore	Kanakapura	Naikanahalli	103
22.	Bangalore	Nelamangala	Adakimaranahally	63
23.	Bangalore	Ramnagar	Kailancha	90
24.	Bellary	Bellary	Allipuram Ii	128
25.	Bellary	Bellary	Bisalahalli	60
26.	Bellary	Bellary	Kurugodu	82
27.	Bellary	Hospet	Hampi	102
28.	Belgaum	Athani	Badchi	242
29.	Belgaum	Athani	Halyal	65
30.	Belgaum	Athani	Khotanatti	46
31.	Belgaum	Athani	Nandagaon	236
32.	Belgaum	Bailhongal	Bailhongal	88
33.	Belgaum	Belgaum	Belgaum	49
34.	Belgaum	Chikodi	Eskamba	173
35.	Belgaum	Chikodi	Galatga	133
36.	Belgaum	Hukkeri	Bellad Bagewadi	52
37.	Belgaum	Rayabag	Chincholi	130
38.	Belgaum	Saundatti	Mamadapur	84
39.	Belgaum	Saundatti	Soundalga	48
40.	Bidar	Aurad	Dongargaon	137
41.	Bidar	Aurad	Wadegaon	115
42.	Bidar	Basavakalyan	Mudebi	200
43.	Bidar	Basavakalyan	Rajeshwara	57
44.	Bidar	Bhalki	Bhalki	128
45.	Bidar	Bhalki	Bhatamara	89
46.	Bidar	Bhalki	Khanapur (Bidar)	94
47.	Bidar	Bhalki	Morambi	79
48.	Bidar	Homnabad	Changler	205
49.	Bidar	Homnabad	Hallikheda	56
50.	Bidar	Homnabad	Nirna	47
51.	Bijapur	Bagewadi	Huvinahippargi	280

Sl. No.	District	Block	Location	Nitrate (mg/l)
52.	Bijapur	Bagewadi	Teligi	163
53.	Bijapur	Bijapur	Honnutagi	158
54.	Bijapur	Bijapur	Tikota	109
55.	Bijapur	Bijapur	Torvi	46
56.	Bijapur	Indi	Indi	265
57.	Bijapur	Indi	Nimbal	141
58.	Bijapur	Muddebihal	Hiremural	95
59.	Bijapur	Muddebihal	Pettepur	176
60.	Bijapur	Sindgi	Hanchali	254
61.	Bijapur	Sindgi	Korahalli	69
62.	Chikmagalur	Kadur	Antargatta	63
63.	Chikmagalur	Tarikere	Ajjampur (A)	127
64.	Chitradurga	Chitradurga	Chitradurga	64
65.	Chitradurga	Chitradurga	Hartikote	122
66.	Chitradurga	Chitradurga	Siddavandurga	63
67.	Chitradurga	Hiriyur	Vaddikere	58
68.	Chitradurga	Holalakere	Arehalli	88
69.	Chitradurga	Holalakere	Talya	92
70.	Chitradurga	Hosadurga	Hosadurga	142
71.	Chitradurga	Hosadurga	Madatkeri	129
72.	Chitradurga	Hosadurga	Narsipura	610
73.	Davangere	Davangere	Averegere	72
74.	Davangere	Harapanahalli	Arsikere	110
75.	Davangere	Harapanahalli	Harpanahalli	50
76.	Davangere	Harihara	Karlahalli	52
77.	Davangere	Harihara	Vasana	85
78.	Davangere	Jagalur	Jagalur	210
79.	Dharwad	Dharwar	Mugad	48
80.	Dharwad	Kundgol	Gudgeri	170
81.	Gadag	Gadag	Nagasamudra	130
82.	Gadag	Naragunda	Belavanki	104
83.	Gadag	Shirahatti	Belhatti	82
84.	Gadag	Shirahatti	Ramgeri	192
85.	Gulbarga	Afzalpur	Gobur Buzurg	228
86.	Gulbarga	Afzalpur	Karajgi	113
87.	Gulbarga	Afzalpur	Mashal	60
88.	Gulbarga	Aland	Kamlanagar (Bodhan)	135
89.	Gulbarga	Aland	Ladmogli	94
90.	Gulbarga	Chincholi	Kadli	128
91.	Gulbarga	Chincholi	Kallur	46
92.	Gulbarga	Chincholi	Kollur (Gulbarga)	58
93.	Gulbarga	Chitapur	Danduti	98

Sl. No.	District	Block	Location	Nitrate (mg/l)
94.	Gulbarga	Chitapur	Haldihal	50
95.	Gulbarga	Gulbarga	Jogur	132
96.	Gulbarga	Gulbarga	Pathan	128
97.	Hassan	Arkalgud	Nilavagilu	52
98.	Hassan	Arsikere	Arasikere	68
99.	Hassan	Arsikere	Harnahalli	162
100.	Hassan	Belur	Halebeedu	54
101.	Hassan	Belur	Singapurapet	60
102.	Hassan	Hassan	Bageshpura (A)	140
103.	Hassan	Hassan	Gorur	60
104.	Hassan	Holenarsipur	Kuppe	46
105.	Haveri	Hanagal	Hanumankoppa	64
106.	Haveri	Shiggaon	Tadas	56
107.	Kodagu	Mercara	Mercara	50
108.	Kodagu	Somvarpet	Kodlipet	130
109.	Kodagu	Virajendrapet	Ammatti (Karmad)	100
110.	Kolar	Bangarpet	Jodikottur	100
111.	Kolar	Gauribidanur	Pura	48
112.	Koppal	Gangavathi	Hulihaidar	175
113.	Koppal	Gangavathi	Kanakagiri	65
114.	Koppal	Gangavathi	Khatapur Khalsha	78
115.	Koppal	Gangavathi	Muslapur	105
116.	Koppal	Gangavathi	Siddapur	161
117.	Koppal	Koppal	Jabbalgudda	84
118.	Koppal	Koppal	Koppal	154
119.	Koppal	Kushtagi	Kyadiguppa	53
120.	Koppal	Kushtagi	Tawargere	121
121.	Koppal	Yelburga	Bandi	76
122.	Koppal	Yelburga	Halgera	85
123.	Koppal	Yelburga	Narsapur	247
124.	Mandya	Krishnarajpet	Tendekere	74
125.	Mandya	Maddur	Besagandhalli Cross	118
126.	Mandya	Maddur	Kaudle	100
127.	Mandya	Maddur	Koppa (Mandya)	156
128.	Mandya	Maddur	Maddur	155
129.	Mandya	Mandya	Kalahalli Mandya	72
130.	Mandya	Nagamangala	Bogadi	50
131.	Mandya	Nagamangala	Chunchanahalli Palya	67
132.	Mandya	Nagamangala	Devalapur	46
133.	Mandya	Nagamangala	Nelligere	117
134.	Mandya	Nagamangala	Ramedevanahalli	80

Sl. No.	District	Block	Location	Nitrate (mg/l)
135.	Mandya	Pandavapura	Ankegowdanakop palu	127
136.	Mandya	Pandavapura	Belidegula	230
137.	Mandya	Pandavapura	Madesvarapur	138
138.	Mandya	Pandavapura	Melukote	242
139.	Mandya	Srirangapatna	Arakere	193
140.	Mandya	Srirangapatna	Kodiyala	134
141.	Mandya	Srirangapatna	Mahadevapura	72
142.	Mandya	Srirangapatna	Mandya Koppalu	289
143.	Mandya	Srirangapatna	Srirangapatna	158
144.	Mysore	T.Narsipur	Muguru	46
145.	Raichur	Deodurga	Gabbur	118
146.	Raichur	Deodurga	Jalahalli	214
147.	Raichur	Lingsugur	Chhatra	101
148.	Raichur	Lingsugur	Mudugal	92
149.	Raichur	Manvi	Bagalvad	75
150.	Raichur	Manvi	Nawalkal	140
151.	Raichur	Raichur	Kalmali	200
152.	Raichur	Raichur	Raichur	76
153.	Raichur	Sindhanur	Gudadur	77
154.	Raichur	Sindhanur	Turvihal	70
155.	Shimoga	Bhadravathi	Bhadravati	57
156.	Shimoga	Shikaripur	Belur (Shimoga)	140
157.	Shimoga	Shimoga	Bilingiri	58
158.	Shimoga	Shimoga	Sugur	201
159.	Shimoga	Shimoga	Umbilibailu	68
160.	Udupi	Kundapura	Coondapur	70
161.	Udupi	Udupi	Udipi	65
162.	Uttar Kannada	Karwar	Karwar	140
163.	Uttar Kannada	Karwar	Sadashivgad	208
164.	Uttar Kannada	Kumta	Badal	202
165.	Uttar Kannada	Siddapur	Siddapura Nk	115
Kerala				
1.	Alappuzha	Kanjikuzhi	Valavanad	118
2.	Idukki	Azhutha	Vandiperiyar	112
3.	Idukki	Kattappana	Kattapana	167
4.	Idukki	Nedumkandam	Poopara	70
5.	Kollam	Chadayamangalam	Kadakkal	68
6.	Kollam	Chavara	Neendakara	56
7.	Kollam	Chavara	Vadakkumthala west	58
8.	Kollam	Kollam corporation	Iravipuram I	97
9.	Kollam	Kollam corporation	Kollam	72

Sl. No.	District	Block	Location	Nitrate (mg/l)
10.	Kollam	Pathanapuram	Pattanapuram	72
11.	Kottayam	Kaduthuruthy	Thalayolaparambu 1	45
12.	Kottayam	Madapalli	Changanacerry	57
13.	Kottayam	Madapalli	Paippad	70
14.	Kozhikode	Kozhikode	Beypore	124
15.	Kozhikode	Kozhikode corporation	Kozhikode	99
16.	Malappuram	Mankada	Pulamantol	55
17.	Palakkad	Alathur	Vadakkancherry	54
18.	Palakkad	Attapadi	Chavadiyur	51
19.	Palakkad	Ottapalam	Ottapalam	105
20.	Palakkad	Ottapalam	Vaniyamkulam	65
21.	Pathanamthitta	Elanthoor	Pathanamthitta	49
22.	Pathanamthitta	Parakkodu	Enathu	52
23.	Thiruvananthapuram	Chirayinkeezhu	Kadakkavur	53
24.	Thiruvananthapuram	Chirayinkeezhu	Perumathura	58
25.	Thiruvananthapuram	Kazhakuttam	Kazhakuttam	49
26.	Thiruvananthapuram	Kilimanoor	Kallambalam	90
27.	Thiruvananthapuram	Nemom	Balaramapuram	80
28.	Thiruvananthapuram	Vamanapuram	Pangode	52
29.	Thrissur	Chalakkudi	Muringur	142
30.	Thrissur	Kodungallur	Kodungallur I	60
31.	Thrissur	Ollukkara	Mulankunnathukavu	53
32.	Thrissur	Puzhakkal	Keecheri	69
33.	Wayanad	Kalpetta	Kalpetta	54
34.	Wayanad	Kalpetta	Vaduvanchal	56
Madhya Pradesh				
1.	Anuppur	Anuppur	Deohara	99
2.	Ashok Nagar	Chanderi	Chanderi	251
3.	Ashok Nagar	Mungawali	Bahadurpur	279
4.	Balaghat	Baihar	Mukki	46
5.	Balaghat	Baihar	Samnapur	50
6.	Balaghat	Katangi	Katedhara	133
7.	Balaghat	Khairlanji	Bonkatta	50
8.	Balaghat	Khairlanji	Miragpur	125
9.	Balaghat	Lalbarra	Lalburra	70

Sl. No.	District	Block	Location	Nitrate (mg/l)
10.	Barwani	Newali	Niwali	86
11.	Barwani	Rajpur	Baruphatak	130
12.	Barwani	Rajpur	Rajpur	47
13.	Barwani	Sendhawa	Sendhwa	45
14.	Barwani	Thikri	Talwaddeg	47
15.	Betul	Betul	Thapa	59
16.	Betul	Chicholi	Nimpani	145
17.	Betul	Multai	Junapani	62
18.	Betul	Prabhat Pattam	Pattan	65
19.	Betul	Shahpur	Bhonra	63
20.	Bhind	Ater	Surpura	87
21.	Bhind	Gohad	Mau	313
22.	Bhind	Lahar	Dewri	251
23.	Bhind	Lahar	Lahar	61
24.	Bhind	Mehgaon	Chirole	60
25.	Bhopal	Berasia	Berasia	79
26.	Bhopal	Phanda	Islamnagar	69
27.	Burhanpur	Burhanpur	Burhanpur	101
28.	Burhanpur	Burhanpur	Nachankheda	61
29.	Burhanpur	Khaknar	Khaknar	107
30.	Burhanpur	Khaknar	Manjrod Kalan	55
31.	Burhanpur	Khaknar	Pipalpani	124
32.	Chhatarpur	Bada Malhara	Sadwa	58
33.	Chhatarpur	Bada Malhara	Sendpa	60
34.	Chhatarpur	Bakswaha	Buxwaha	87
35.	Chhatarpur	Bijawar	Bijawar	51
36.	Chhatarpur	Bijawar	Raipura	81
37.	Chhatarpur	Eshanagar	Matgawan	55
38.	Chhatarpur	Eshanagar	Niwari	48
39.	Chhatarpur	Gaurihar	Sarwai	138
40.	Chhatarpur	Laundi	Laundi	106
41.	Chhatarpur	Nowgaon	Nowgaon	89
42.	Chhatarpur	Nowgaon	Tatampur	187
43.	Chhatarpur	Rajnagar	Ganj	83
44.	Chhindwara	Amarwara	Singhori	103
45.	Chhindwara	Chhindwara	Chhindwara	92
46.	Chhindwara	Mohkhera	Linga Rly.Stn.	56
47.	Chhindwara	Mohkhera	Silwani	254
48.	Chhindwara	Pandhurana	Piplanarayanwar	59
49.	Chhindwara	Parasia	Lahgudna	57
50.	Chhindwara	Tamia	Chhindi	98
51.	Chhindwara	Tamia	Tamia	50
52.	Damoh	Damoh	Palar	114

Sl. No.	District	Block	Location	Nitrate (mg/l)
53.	Datia	Datia	Datia	187
54.	Dewas	Bagli	Bamohri	105
55.	Dewas	Bagli	Karnawad	75
56.	Dewas	Bagli	Karnawad	52
57.	Dewas	Bagli	Pipri	156
58.	Dewas	Bagli	Punjabura	132
59.	Dewas	Kannod	Kantaphor	111
60.	Dewas	Khategaon	Dhayali	51
61.	Dhar	Badnawar	Chayan	61
62.	Dhar	Dhar	Dhar	93
63.	Dhar	Dharampuri	Dhamnod	60
64.	Dhar	Gandhwani	Zeerabad	93
65.	Dhar	Kukshi	Kukshi	68
66.	Dhar	Manawar	Singhana	161
67.	Dhar	Sardarpur	Rajod	87
68.	Dhar	Umarban	Manawar	112
69.	Gwalior	Bhitarwar	Bhitarwar	75
70.	Gwalior	Dabra	Dabra	72
71.	Gwalior	Dabra	Makoda	58
72.	Gwalior	Ghatigaon	Aron	72
73.	Gwalior	Morar	Behat	53
74.	Gwalior	Morar	Gwalior	100
75.	Harda	Khirkhya	Chhipawad	161
76.	Harda	Khirkhya	Mandla	56
77.	Harda	Khirkhya	Morgarhi	48
78.	Harda	Timarni	Magardha	46
79.	Harda	Timarni	Temagaon	66
80.	Hoshangabad	Babai	Bagratawa	54
81.	Hoshangabad	Bankhedhi	Bankheri	185
82.	Hoshangabad	Hoshangabad	Nimsadia	134
83.	Hoshangabad	Kesla	Pathrauta	66
84.	Hoshangabad	Kesla	Sankhera	66
85.	Hoshangabad	Kesla	Suktawa	66
86.	Hoshangabad	Pipariya	Matkuli	52
87.	Hoshangabad	Pipariya	Pipariya	112
88.	Hoshangabad	Pipariya	Sandia	189
89.	Hoshangabad	Seoni Malwa	Bhilatdeo	211
90.	Hoshangabad	Sohagpur	Semri	97
91.	Indore	Depalpur	Machal	139
92.	Indore	Indore	Dudhiya	177
93.	Indore	Indore	Hatod	79
94.	Indore	Sawer	Sanwer	52
95.	Jabalpur	Majhauili	Majholi	161

Sl. No.	District	Block	Location	Nitrate (mg/l)
96.	Jabalpur	Sihora	Umariapan	211
97.	Jhabua	Alirajpur	Nanpur	170
98.	Jhabua	Bhabra	Bhabra	61
99.	Jhabua	Jobat	Jobat	159
100.	Jhabua	Kattiwada	Chandpur	60
101.	Jhabua	Petlawad	Petlabad	205
102.	Katni	Badwara	Khitoli	62
103.	Katni	Katni	Katni	119
104.	Katni	Katni	Lakhapateri	47
105.	Katni	Vijay Raghavgarh	Barhi	107
106.	Katni	Vijay Raghavgarh	Ubra	47
107.	Khandwa	Chhaigaon Makhan	Chhegaonmakhan	56
108.	Khandwa	Chhaigaon Makhan	Karoli	81
109.	Khandwa	Chhaigaon Makhan	Pandhana	190
110.	Khandwa	Harsud	Bori Saray	125
111.	Khandwa	Khalawa	Khalwa	155
112.	Khandwa	Khandwa	Amalpura	91
113.	Khandwa	Khandwa	Jaswadi	47
114.	Khandwa	Khandwa	Khandwa	69
115.	Khandwa	Punasa	Kelwa Kalan	97
116.	Khargone	Gogawan	Gogaon	198
117.	Khargone	Kasrawad	Sawda	87
118.	Khargone	Khargone	Un	87
119.	Mandla	Mandla	Gwari	73
120.	Mandla	Mandla	Pathiri Patpara	45
121.	Mandla	Nainpur	Dithori	61
122.	Mandsaur	Bhanpura	Babulda	140
123.	Mandsaur	Bhanpura	Dudhkheri	75
124.	Mandsaur	Bhanpura	Sandhara	58
125.	Mandsaur	Garoth	Barkheranayak	125
126.	Mandsaur	Garoth	Shamgarh	217
127.	Mandsaur	Malhargarh	Botalganj	55
128.	Mandsaur	Malhargarh	Malhargarh	59
129.	Mandsaur	Malhargarh	Narayangarh	171
130.	Mandsaur	Malhargarh	Pipaliya	51
131.	Mandsaur	Mandsaur	Basakheda	114
132.	Mandsaur	Mandsaur	Daloda	91
133.	Mandsaur	Sitamaui	Khejriya	49
134.	Mandsaur	Sitamaui	Surjani	72
135.	Morena	Joura	Huseinpur	332
136.	Morena	Pahadgarh	Pahargarh	97
137.	Narsimhapur	Chawarpatha	Barman	72
138.	Narsimhapur	Chawarpatha	Dobhi	50

Sl. No.	District	Block	Location	Nitrate (mg/l)
139.	Narsimhapur	Chawarpatha	Gadarwara	48
140.	Narsimhapur	Kareli	Betli	163
141.	Narsimhapur	Narsimhapur	Sarsala	53
142.	Narsimhapur	Narsimhapur	Sundernagar	124
143.	Narsimhapur	Sainkheda	Deoribadwani	87
144.	Narsimhapur	Sainkheda	Salichauka	45
145.	Neemuch	Jawad	Morban	62
146.	Neemuch	Manasa	Besla	148
147.	Neemuch	Manasa	Bhadana	90
148.	Neemuch	Manasa	Gota Pipliya	87
149.	Neemuch	Manasa	Jamalpara	129
150.	Neemuch	Manasa	Kukreshwar	280
151.	Neemuch	Manasa	Kundaliya	173
152.	Neemuch	Manasa	Manasa	122
153.	Neemuch	Manasa	Rampura	62
154.	Neemuch	Neemuch	Nimuch	61
155.	Neemuch	Neemuch	Savan	123
156.	Panna	Gunnor	Badagaon	55
157.	Panna	Panna	Bahera	50
158.	Panna	Shahnagar	Mohendra	60
159.	Raisen	Begamganj	Begumganj	286
160.	Raisen	Begamganj	Paloha	81
161.	Raisen	Goharganj	Barkheda	112
162.	Raisen	Goharganj	Goharganj	52
163.	Raisen	Goharganj	Maindwa	99
164.	Rajgarh	Jirapur	Chhapihera	59
165.	Rajgarh	Khilchipur	Khilchipur	113
166.	Rajgarh	Narsingarh	Ganayari	267
167.	Rajgarh	Narsingarh	Gandhigram	59
168.	Rajgarh	Sarangpur	Sarangpur	54
169.	Ratlam	Bajna	Bajna	105
170.	Ratlam	Bajna	Raoti	171
171.	Ratlam	Jaora	Mindli	118
172.	Ratlam	Piploda	Piploda	57
173.	Ratlam	Ratlam	Dhannod	53
174.	Ratlam	Ratlam	Namli	73
175.	Ratlam	Ratlam	Ratlam	103
176.	Ratlam	Ratlam	Rattagarhkhera	45
177.	Ratlam	Sailana	Sailana	81
178.	Ratlam	Sailana	Shivgarh	68
179.	Rewa	Hanumana	Hanumana	75
180.	Rewa	Naigarhi	Naigarhi	46
181.	Rewa	Rewa	Amilki	95

Sl. No.	District	Block	Location	Nitrate (mg/l)
182.	Sagar	Banda	Banda	92
183.	Sagar	Banda	Manjla	98
184.	Sagar	Deori	Deorikhas	49
185.	Sagar	Jaisinagar	Jaisingh Nagar	159
186.	Sagar	Jaisinagar	Sarkhedi	148
187.	Sagar	Jaisinagar	Surkhi	148
188.	Sagar	Khurai	Khurai	55
189.	Sagar	Malthon	Barodia	171
190.	Sagar	Rahatgarh	Hurra	47
191.	Sagar	Rahatgarh	Hurra	85
192.	Sagar	Rahatgarh	Jaruakhera	47
193.	Sagar	Rahatgarh	Naryawali	53
194.	Sagar	Rehli	Rehli	180
195.	Sagar	Shahgarh	Hirapur	129
196.	Satna	Maihar	Amdara	185
197.	Satna	Sohawal	Rampur	49
198.	Satna	Unchahara	Uchehara	285
199.	Sehore	Ashta	Ashta	358
200.	Sehore	Budni	Bhaya	59
201.	Sehore	Sehore	Jattakheda	51
202.	Seoni	Barghat	Kauria	108
203.	Seoni	Chhapara	Ghunai	48
204.	Seoni	Dhanaura	Khamaria	110
205.	Seoni	Dhanaura	Kudari	50
206.	Seoni	Dhanaura	Mehta	180
207.	Seoni	Ghansaur	Ghansor	90
208.	Seoni	Lakhnadon	Banjari	55
209.	Seoni	Lakhnadon	Madai	68
210.	Seoni	Seoni	Kaniwara	132
211.	Shahdol	Beohari	Beohari	56
212.	Shahdol	Burhar	Bhikhampur	49
213.	Shahdol	Jaysingh Nagar	Amjhor	62
214.	Shahdol	Pali	Gohparu	92
215.	Shahdol	Pali	Gungutti	48
216.	Shahdol	Sohagpur	Amiliya	123
217.	Shahdol	Sohagpur	Burhar	75
218.	Shajapur	Agar	Agar	128
219.	Shajapur	Kalapipal	Kalapipal	169
220.	Shajapur	Moman Badodia	Salsalai	56
221.	Shajapur	Shajapur	M.Barodia	77
222.	Sheopur	Karahal	Kalmi	340
223.	Sheopur	Karahal	Karahal	125
224.	Sheopur	Karahal	Kunorh	60

Sl. No.	District	Block	Location	Nitrate (mg/l)
225.	Sheopur	Vijaypur	Harkui	59
226.	Sheopur	Vijaypur	Panchoncolony	176
227.	Sheopur	Vijaypur	Shyampur	81
228.	Sheopur	Vijaypur	Vijaypurcolony	166
229.	Shivpuri	Badarwas	Badarwas	114
230.	Shivpuri	Badarwas	Ganeshkhhera	154
231.	Shivpuri	Badarwas	Khareh	138
232.	Shivpuri	Karera	Amola	54
233.	Shivpuri	Karera	Awas	129
234.	Shivpuri	Karera	Karera	86
235.	Shivpuri	Karera	Sarsod	367
236.	Shivpuri	Khaniyadhana	Achhroni	102
237.	Shivpuri	Khaniyadhana	Masoori	220
238.	Shivpuri	Narwar	Behgwan	62
239.	Shivpuri	Narwar	Mangroni	170
240.	Shivpuri	Pichhore	Bhutni	125
241.	Shivpuri	Pichhore	Pichhore	97
242.	Shivpuri	Pohri	Ainpura	71
243.	Shivpuri	Pohri	Girwani	74
244.	Shivpuri	Pohri	Pohari	78
245.	Shivpuri	Shivpuri	Bhagora	58
246.	Shivpuri	Shivpuri	Narwar	235
247.	Shivpuri	Shivpuri	Patera	119
248.	Shivpuri	Shivpuri	Santanwara	118
249.	Shivpuri	Shivpuri	Shivpuri	68
250.	Shivpuri	Shivpuri	Sirsod	110
251.	Sidhi	Majhauri	Jogipahari	48
252.	Tikamgarh	Jatara	Jatara	111
253.	Tikamgarh	Niwari	Niwari	86
254.	Tikamgarh	Niwari	Orchha	102
255.	Tikamgarh	Palera	Digaura	120
256.	Tikamgarh	Palera	Ladhaura	83
257.	Tikamgarh	Prithvipur	Birorakhet	291
258.	Tikamgarh	Prithvipur	Prithipur	58
259.	Tikamgarh	Tikamgarh	Baragaon	84
260.	Tikamgarh	Tikamgarh	Majna	195
261.	Ujjain	Badnagar	Palsoda	67
262.	Ujjain	Mahidpur	Delchi Buzurg	76
263.	Ujjain	Mahidpur	Mahidpurroad	48
264.	Ujjain	Ujjain	Hasampura	94
265.	Ujjain	Ujjain	Panth Piplai	67
266.	Umaria	Karkeli	Nigari	98
267.	Vidisha	Basoda	Ghatera	102

Sl. No.	District	Block	Location	Nitrate (mg/l)
268.	Vidisha	Basoda	Udaipur	131
269.	Vidisha	Lateri	Anandpur	86
270.	Vidisha	Sironj	Patharia	338
Maharastra				
1.	Ahmednagar	Ahmednagar	Banpimpri	80
2.	Ahmednagar	Ahmednagar	Dahigaon	234
3.	Ahmednagar	Ahmednagar	Jakhangaon	240
4.	Ahmednagar	Ahmednagar	Jeur	63
5.	Ahmednagar	Karjat	Kolwadi	78
6.	Ahmednagar	Karjat	Rassin	105
7.	Ahmednagar	Kopargaon	Manjur	88
8.	Ahmednagar	Kopargaon	Rahata	82
9.	Ahmednagar	Newasa	Shirasgaon	69
10.	Ahmednagar	Newasa	Vadala Bhairoba	151
11.	Ahmednagar	Parner	Supe	97
12.	Ahmednagar	Pathardi	Pathardi	94
13.	Ahmednagar	Rahuri	Devlali	80
14.	Ahmednagar	Rahuri	Malharwadi	113
15.	Ahmednagar	Sangamner	Chandanapuri	74
16.	Ahmednagar	Shevgaon	Ghotan	82
17.	Ahmednagar	Shrigonda	Shrigonda	82
18.	Ahmednagar	Shrirampur	Babhuleshwar	124
19.	Akola	Akola	Akola	54
20.	Akola	Akot	Patsul	350
21.	Akola	Balapur	Andura	50
22.	Akola	Barshitakli	Pinjar	80
23.	Amravati	Amravati	Badnera	118
24.	Amravati	Amravati	Walgaon	161
25.	Amravati	Chandur Bazar	Wishroli	53
26.	Amravati	Chandur Railway	Chandur Railway	112
27.	Amravati	Daryapur	Wadner	226
28.	Amravati	Morshi	Ashtagaon	127
29.	Amravati	Morshi	Chicholi	166
30.	Amravati	Morshi	Hiwarkheda	114
31.	Amravati	Morshi	Khanapur	203
32.	Amravati	Morshi	Kher	769
33.	Amravati	Morshi	Rithpur	342
34.	Amravati	Nandgaon	Shivni	96
35.	Amravati	Tivsa	Anjansingi	164
36.	Amravati	Tivsa	Kurha	78
37.	Amravati	Tivsa	Sindola	581
38.	Amravati	Tivsa	Teosa	224
39.	Aurangabad	Aurangabad	Apatgaon	120

Sl. No.	District	Block	Location	Nitrate (mg/l)
40.	Aurangabad	Aurangabad	Chauka	100
41.	Aurangabad	Gangapur	Kinnal	70
42.	Aurangabad	Kannad	Digar Pishore	80
43.	Aurangabad	Kannad	Hatnur	75
44.	Aurangabad	Paithan	Adul	410
45.	Aurangabad	Sillod	Ajanta	90
46.	Aurangabad	Sillod	Patri	155
47.	Beed	Ambejogai	Dharmapuri	105
48.	Beed	Ambejogai	Talni	72
49.	Beed	Ashti	Dhanora	129
50.	Beed	Ashti	Khadkhat	103
51.	Beed	Beed	Neknoor	68
52.	Beed	Georai	Kolegaon	172
53.	Beed	Georai	Umapur	172
54.	Beed	Kaij	Adas	284
55.	Beed	Kaij	Dharur	135
56.	Beed	Kaij	Kumbhephal	116
57.	Beed	Majalgaon	Majalgaon	78
58.	Beed	Patoda	Manur	84
59.	Beed	Patoda	Patoda	71
60.	Beed	Patoda	Pimpalwandi	53
61.	Bhandara	Arjuni Morgaon (N)	Ajgaon	50
62.	Bhandara	Bhandara	Kharbi	160
63.	Bhandara	Bhandara	Nilaj	65
64.	Bhandara	Bhandara	Palari	60
65.	Bhandara	Lakhandur	Lakhandur	51
66.	Bhandara	Mohadi	Jamb	135
67.	Bhandara	Mohadi	Usarra	150
68.	Bhandara	Pauni	Madgi	50
69.	Bhandara	Sakoli	Pitjhari	70
70.	Bhandara	Tumsar	Chicholi	180
71.	Bhandara	Tumsar	Sihora	111
72.	Bhandara	Tumsar	Tumsar Khapa	85
73.	Buldana	Buldana	Buldana	121
74.	Buldana	Buldana	Dhad	151
75.	Buldana	Buldana	Karwand	67
76.	Buldana	Chikhli	Kelwad	185
77.	Buldana	Chikhli	Mera Khurd	73
78.	Buldana	Deulgaon Raja	Deolgaon Raja	137
79.	Buldana	Jalgaon Jamod	Khandui	54
80.	Buldana	Khamgaon	Garadgaon	127
81.	Buldana	Mehkar	Kingaon Raja	358
82.	Buldana	Mehkar	Sultanpur	157

Sl. No.	District	Block	Location	Nitrate (mg/l)
83.	Buldana	Motala	Dhamangaon	233
84.	Buldana	Motala	Motala	221
85.	Buldana	Motala	Rohinkhed	150
86.	Buldana	Nandura	Tarvadi	58
87.	Buldana	Sangrampur	Warwat Bakhal	174
88.	Chandrapur	Bhadravati	Mangli	227
89.	Chandrapur	Brahmapuri	Mendki	48
90.	Chandrapur	Brahmapuri	Nagbhir	94
91.	Chandrapur	Chandrapur	Chandrapur	45
92.	Chandrapur	Chandrapur	Ghugus	89
93.	Chandrapur	Chandrapur	Kothari	79
94.	Chandrapur	Chandrapur	Mahurli	111
95.	Chandrapur	Chandrapur	Mul	69
96.	Chandrapur	Chandrapur	Wihar Khurd	138
97.	Chandrapur	Chimur	Kolara	256
98.	Chandrapur	Chimur	Shankarpur	96
99.	Chandrapur	Gondpipri	Dabha	143
100.	Chandrapur	Nagbhir	Mohadi Mokasa	184
101.	Chandrapur	Rajura	Sondo	114
102.	Chandrapur	Rajura	Wirur	73
103.	Chandrapur	Warora	Bhandak	82
104.	Chandrapur	Warora	Chora	146
105.	Chandrapur	Warora	Madheri	45
106.	Chandrapur	Warora	Rampur	76
107.	Dhule	Dhule	Ajnale	116
108.	Dhule	Dhule	Avdhan	75
109.	Dhule	Dhule	Deobhane	90
110.	Dhule	Dhule	Dhule	197
111.	Dhule	Dhule	Mukti	264
112.	Dhule	Dhule	Ner	85
113.	Dhule	Sakri	Ichhapur	142
114.	Dhule	Sakri	Sakri	128
115.	Dhule	Shirpur	Palasner	123
116.	Dhule	Sindkhed	Chimthane	102
117.	Dhule	Sindkhed	Methi	102
118.	Gadchiroli	Aheri	Medpalli	120
119.	Gadchiroli	Armori	Rangi	58
120.	Gadchiroli	Armori	Shankarpur	230
121.	Gadchiroli	Chamorshi	Ghot	292
122.	Gadchiroli	Chamorshi	Konsari	214
123.	Gadchiroli	Dhanora	Murumgaon	49
124.	Gadchiroli	Etapalli	Hidri	228
125.	Gadchiroli	Etapalli	Jarawadi	77

Sl. No.	District	Block	Location	Nitrate (mg/l)
			Indiranagar)	
126.	Gadchiroli	Etapalli	Pirimili	164
127.	Gadchiroli	Etapalli	Tadgaon	99
128.	Gadchiroli	Etapalli	Timiram	51
129.	Gadchiroli	Gadchiroli	Armor	238
130.	Gadchiroli	Gadchiroli	Bori	378
131.	Gadchiroli	Gadchiroli	Chatgaon	201
132.	Gadchiroli	Gadchiroli	Chaudampalli	358
133.	Gadchiroli	Gadchiroli	Gadchiroli	74
134.	Gadchiroli	Gadchiroli	Govindpur	84
135.	Gadchiroli	Gadchiroli	Kurkhera	72
136.	Gadchiroli	Gadchiroli	Nandigaon	120
137.	Gadchiroli	Kurkheda	Betkati	82
138.	Gadchiroli	Kurkheda	Chandona Tola	95
139.	Gadchiroli	Kurkheda	Purada	70
140.	Gadchiroli	Sironcha	Angeesa	51
141.	Gadchiroli	Sironcha	Bhamragarh	47
142.	Gadchiroli	Sironcha	Govindgaon	168
143.	Gadchiroli	Sironcha	Itapalli	81
144.	Gadchiroli	Sironcha	Repanpalli	53
145.	Gadchiroli	Sironcha	Umanur	85
146.	Gondia	Arjuni Morgaon	Salebardi	105
147.	Gondia	Deori	Deori	63
148.	Gondia	Gondia	Rajegaon	65
149.	Gondia	Tirora	Nawegaon	92
150.	Gondia	Tirora	Tiroda	49
151.	Hingoli	Basmath	Alegaon (Old)	55
152.	Hingoli	Basmath	Babulgaon	49
153.	Hingoli	Hingoli	Kolsa	118
154.	Hingoli	Jintur	Hatta	89
155.	Jalgaon	Amalner	Sadavan Bk.	270
156.	Jalgaon	Bhusawal	Bodwad	62
157.	Jalgaon	Chalisgaon	Chalisgaon	98
158.	Jalgaon	Edlbad	Mendhoda	90
159.	Jalgaon	Edlbad	Narvel	82
160.	Jalgaon	Erandol	Dharangaon	123
161.	Jalgaon	Erandol	Kasoda	167
162.	Jalgaon	Erandol	Pimpalkotha	109
163.	Jalgaon	Jalgaon	Naseerabad	311
164.	Jalgaon	Jamner	Jamner	71
165.	Jalgaon	Pachora	Varkhedi	161
166.	Jalgaon	Raver	Raver	123
167.	Jalna	Ambad	Ambad	72

Sl. No.	District	Block	Location	Nitrate (mg/l)
168.	Jalna	Ambad	Dungaon	125
169.	Jalna	Ambad	Raniunchagaon	120
170.	Jalna	Ambad	Ranjani	111
171.	Jalna	Ambad	Tirthpuri	147
172.	Jalna	Badnapur	Badnapur	73
173.	Jalna	Bhokardan	Talegaon	310
174.	Jalna	Jafrabad	Jafrabad	1750
175.	Jalna	Jalna	Chikli	640
176.	Jalna	Jalna	Longaon	460
177.	Jalna	Jalna	Sevli	150
178.	Jalna	Jalna	Silegaon	52
179.	Jalna	Partur	Mantha	258
180.	Jalna	Partur	Watur	67
181.	Kolhapur	Ajara	Ajra	54
182.	Kolhapur	Ajara	Authur	50
183.	Kolhapur	Bhudargad	Pimpalgaon	71
184.	Kolhapur	Gadhinglaj	Gadinglaj	69
185.	Kolhapur	Gadhinglaj	Halkarne	320
186.	Kolhapur	Gadhinglaj	Nesari	71
187.	Kolhapur	Hatkanangle	Kini wathar	53
188.	Kolhapur	Karvir	Shiroli	60
189.	Kolhapur	Panhala	Pimpli Tarf Thane	47
190.	Kolhapur	Shahuwadi	Wadicharan	65
191.	Latur	Ahmedpur	Chapoli	141
192.	Latur	Latur	Borgaon Kale	225
193.	Latur	Latur	Budhoda	190
194.	Latur	Latur	Murud	70
195.	Latur	Latur	Murud-Akola	74
196.	Latur	Nilanga	Kelgaon	163
197.	Nagpur	Hingna	Kanholi bara	59
198.	Nagpur	Kalmeshwar	Dhapewada	79
199.	Nagpur	Kamptee	Koradi	67
200.	Nagpur	Kuhi	Mangli	66
201.	Nagpur	Nagpur	Panchgaon	45
202.	Nagpur	Nagpur	Sathnaori	102
203.	Nagpur	Nagpur	Wardhamna	70
204.	Nagpur	Nagpur Urban	Hanumannagar	55
205.	Nagpur	Narkhed	Narkhed	184
206.	Nagpur	Narkhed	Rohna	76
207.	Nagpur	Ramtek	Manegaon Tek	143
208.	Nagpur	Ramtek	Ramtek	228
209.	Nagpur	Saoner	Kelod	50
210.	Nagpur	Saoner	Kothulna	105

Sl. No.	District	Block	Location	Nitrate (mg/l)
211.	Nanded	Bhokar	Barad	57
212.	Nanded	Bhokar	Bhokar	179
213.	Nanded	Bhokar	Jhalakwadi	48
214.	Nanded	Bhokar	Nagapur	151
215.	Nanded	Bhokar	Narwat	188
216.	Nanded	Biloli	Naigaon	46
217.	Nanded	Hadgaon	Himayat Nagar	126
218.	Nanded	Hadgaon	Lahan	176
219.	Nanded	Kandhar	Janapuri	64
220.	Nanded	Kinwat	Anjankhed	67
221.	Nanded	Kinwat	Lakmapur	140
222.	Nanded	Mukhed	Jamb Buzurg	125
223.	Nanded	Mukhed	Pala	159
224.	Nanded	Nanded	Malegaon (II)	92
225.	Nanded	Nanded	Mudkhed	208
226.	Nandurbar	Nawapur	Bhadavad	71
227.	Nashik	Baglan	Satana	259
228.	Nashik	Nashik	Kona	53
229.	Nashik	Niphad	Pimpalgaon Baswant	151
230.	Nashik	Niphad	Raslapur	135
231.	Nashik	Sinnar	Sinnar	290
232.	Nashik	Yeola	Andarsul	237
233.	Nashik	Yeola	Savargaon	123
234.	Osmanabad	Bhoom	Wakwad	107
235.	Osmanabad	Osmanabad	Dhoki	176
236.	Osmanabad	Osmanabad	Vadgaon Siddheswar	54
237.	Osmanabad	Paranda	Pimpalwandi	176
238.	Osmanabad	Tuljapur	Gandora	77
239.	Osmanabad	Umarga	Lohara Buzurg	48
240.	Parbhani	Jintur	Gojegaon	120
241.	Parbhani	Jintur	Jintur	155
242.	Parbhani	Parbhani	Pedgaon	150
243.	Parbhani	Parbhani	Singanapur	200
244.	Parbhani	Parbhani	Todkalas	50
245.	Parbhani	Pathari	Babulgaon	460
246.	Parbhani	Pathari	Manwat	155
247.	Pune	Ambegaon	Kalamb	68
248.	Pune	Haveli	Parne	51
249.	Pune	Haveli	Uruli Kanchan	63
250.	Pune	Junnar	Otur	47
251.	Pune	Pune	Pune	235

Sl. No.	District	Block	Location	Nitrate (mg/l)
252.	Pune	Purandhar	Pimpri (Kh) Malvasti	71
253.	Sangli	Walwa	Takari	125
254.	Satara	Patan	Manure	94
255.	Satara	Patan	Savanthwadi (Jinti)	69
256.	Satara	Phaltan	Javali	50
257.	Satara	Phaltan	Nimbore	97
258.	Satara	Phaltan	Pimpalwadi	49
259.	Satara	Phaltan	Rajale	50
260.	Solapur	Akkalkot	Akkalkot	114
261.	Solapur	Barshi	Manegaon	122
262.	Solapur	Barshi	Pangri	82
263.	Solapur	Karmala	Karmala	145
264.	Solapur	Madha	Tembhurni	166
265.	Solapur	Malshiras	Velapur	169
266.	Solapur	Mohol	Sohole	241
267.	Solapur	North Solapur	Nannaj	125
268.	Solapur	Pandharpur	Bhandi-Shegaon	65
269.	Solapur	Pandharpur	Ekklapur	65
270.	Solapur	Pandharpur	Pandharpur	254
271.	Solapur	Pandharpur	Ranzani	211
272.	Solapur	Pandharpur	Rople	127
273.	Solapur	Sangola	Sangola	60
274.	Solapur	South Solapur	Nandni	45
275.	Wardha	Arvi	Ashti	190
276.	Wardha	Arvi	Talegaon	131
277.	Wardha	Deoli	Dahegaon	61
278.	Wardha	Deoli	Deoli	187
279.	Wardha	Deoli	Giroli	429
280.	Wardha	Deoli	Muradgaon	83
281.	Wardha	Deoli	Sarul	76
282.	Wardha	Hinganghat	Hinganghat	57
283.	Wardha	Hinganghat	Pipri	75
284.	Wardha	Karanja	Nagalwadi	52
285.	Wardha	Karanja	Sahur	78
286.	Wardha	Samudrapur	Dhondgaon	58
287.	Wardha	Samudrapur	Girad	85
288.	Wardha	Samudrapur	Khandali	454
289.	Wardha	Samudrapur	Sakhra	187
290.	Wardha	Samudrapur	Wasi	168
291.	Wardha	Seloo	Yelakeli	86
292.	Wardha	Wardha	Dahigaon	150

Sl. No.	District	Block	Location	Nitrate (mg/l)
293.	Wardha	Wardha	Madni (New)	127
294.	Wardha	Wardha	Pulgaon	182
295.	Wardha	Wardha	Tigaon	77
296.	Wardha	Wardha	Vadad	93
297.	Wardha	Wardha	Vaygaon	223
298.	Washim	Karanja	Shaha	75
299.	Washim	Malegaon	Medshi	62
300.	Washim	Mangrulpir	Sangaon	145
301.	Washim	Mangrulpir	Shelu Bazar	76
302.	Washim	Mangrulpir	Wada	73
303.	Washim	Manora	Sendurjan Adhao	97
304.	Washim	Risod	Chikli	184
305.	Washim	Risod	Dapuri	75
306.	Washim	Risod	Kenwad	94
307.	Washim	Risod	Loni	106
308.	Washim	Risod	Risod	70
309.	Washim	Washim	Bitoda (Bhoyar)	87
310.	Washim	Washim	Washim	50
311.	Yavatmal	Babulgaon	Pahur	140
312.	Yavatmal	Babulgaon	Savar	250
313.	Yavatmal	Daravha	Digras	97
314.	Yavatmal	Daravha	Selodi	100
315.	Yavatmal	Digras	Vai (Lingi)	397
316.	Yavatmal	Ghatanji	Ghatanji	84
317.	Yavatmal	Ghatanji	Injhala	77
318.	Yavatmal	Ghatanji	Saykheda	67
319.	Yavatmal	Kalamb	Kotha	142
320.	Yavatmal	Kelapur	Karanji	149
321.	Yavatmal	Kelapur	Pahapal	140
322.	Yavatmal	Kelapur	Parwa	78
323.	Yavatmal	Mahagaon	Phul Sawangi	104
324.	Yavatmal	Maregaon	Maregaon	125
325.	Yavatmal	Ner	Dhanaj (Manekwada)	142
326.	Yavatmal	Ner	Ladkhed	60
327.	Yavatmal	Ner	Mohgaon Kasba	488
328.	Yavatmal	Pusad	Marwadi Khurd	75
329.	Yavatmal	Pusad	Pusad	47
330.	Yavatmal	Ralegaon	Mohada	166
331.	Yavatmal	Umarkhed	Dhanki	61
332.	Yavatmal	Wani	Mardi	149
333.	Yavatmal	Yavatmal	Akolabazar	122
334.	Yavatmal	Yavatmal	Babhulgaon	63

Sl. No.	District	Block	Location	Nitrate (mg/l)
335.	Yavatmal	Yavatmal	Chaparda	61
336.	Yavatmal	Yavatmal	Jodmoha	66
337.	Yavatmal	Yavatmal	Kalamb	216
338.	Yavatmal	Yavatmal	Kolambi	145
339.	Yavatmal	Yavatmal	Mangrule	61
340.	Yavatmal	Yavatmal	Wadgaon	45
Orissa				
1.	Angul	Kishorenagar	Boinda	73
2.	Angul	Pallahara	Pallahara	67
3.	Balasore	Balasoresadar	Saragaon	58
4.	Bargarh	Barpali	Kusanpur	79
5.	Bargarh	Barpalli	Mahada	68
6.	Bargarh	Bheden	Khutlipalli	53
7.	Bargarh	Jharbandh	Jharbandh	180
8.	Bhadrak	Dhamnagar	Kothar	140
9.	Bolangir	Bolangir Sadar	Churapali	115
10.	Bolangir	Bolangir Sadar	Dhumamara	75
11.	Bolangir	Khaprakhhol	Khaprakhhol	122
12.	Bolangir	Puintala	Randa	95
13.	Bolangir	Saintala	Saintala<New>	250
14.	Bolangir	Titlagarh	Titlagarh	179
15.	Baudh	Bandh	Ainlapali	60
16.	Baudh	Bandh	Bandh	70
17.	Baudh	Bandh	Sangrampur	116
18.	Baudh	Harbanga	Tilesar	91
19.	Baudh	Harbhanga	Charichak	126
20.	Baudh	Harbhanga	Kusang	224
21.	Baudh	Harbhanga	Landibandh	60
22.	Cuttack	Baramba	Baramba-Ii	76
23.	Cuttack	Barkote	Banki	150
24.	Cuttack	Mahanga	Kuapal	59
25.	Cuttack	Niali	Saradapur	179
26.	Cuttack	Nischintakoili	Madhab	271
27.	Deogarh	Parjang	Kondal	65
28.	Dhenkanal	Dhenkanal Sadar	Karanda	66
29.	Dhenkanal	Hindol	Bhapur	66
30.	Dhenkanal	Hindol	Sading	66
31.	Gajapati	Mohana	Paniganda	51
32.	Ganjam	Chartrapur	Govindpur	226
33.	Ganjam	Chikiti	Koilingi	85
34.	Ganjam	Digapahandi	Digapandi	65
35.	Ganjam	Ganjam	Hummuri	84
36.	Ganjam	Hinjliktatu	Hinjliktatu	116

Sl. No.	District	Block	Location	Nitrate (mg/l)
37.	Ganjam	Hinjlijkatu	Nuapalli	56
38.	Ganjam	Hinjlijkatu	Pochilima	225
39.	Ganjam	K.S.Nagar	Gudiali	55
40.	Ganjam	Kukudahandi	Lathi	102
41.	Ganjam	Kukudakhandi	Berhampur	206
42.	Ganjam	Patrapur	Jayantipur	253
43.	Ganjam	Purshottampur	Bananai	47
44.	Ganjam	Purushottampur	Jamuni	272
45.	Ganjam	Rangeilunda	Dumdumi	81
46.	Ganjam	Rangeilunda	Konishi	59
47.	Ganjam	Rangeilunde	Korapalli	170
48.	Ganjam	Rangeilundi	Gopalpur	58
49.	J.Singhpur	Raghunathpur	Raghunathpur	86
50.	Jajpur	Badchana	Haridaspur	56
51.	Jajpur	Dharamsala	Rampei	168
52.	Jajpur	Sukinda	Chinguripal	111
53.	Jharsuguda	Jharsuguda	Belpahar	46
54.	Jharsuguda	Kulabira	Kulabira	80
55.	Kalahandi	Bhawanipatna	Bawanipatna	56
56.	Kalahandi	Bhawanipatna	Sargigora	139
57.	Kalahandi	Dharamgarh	Chilpa	60
58.	Kalahandi	Golamunda	Daspur	59
59.	Kalahandi	Golamunda	Golmunda	60
60.	Kalahandi	Junagarh	Baldiamal	221
61.	Kalahandi	Junagarh	Matigaon	125
62.	Kalahandi	Kesinga	Utkela	48
63.	Kalahandi	Koksara	Koksara	239
64.	Kalahandi	Narla	Narla	146
65.	Kalahandi	Th.Rampur	Gunupur	56
66.	Kalahandi	Th.Rampur	Thuamalrampur	57
67.	Kendrapara	Kendrapara	Kendrapara	110
68.	Keonjhar	Ghatgaon	Dhenkikot	54
69.	Keonjhar	Joda	Rugudi	46
70.	Keonjhar	Keonjhar Sadar	Haridagot	47
71.	Keonjhar	Patna	Swampatna	55
72.	Khurda	Khurda	Khurda	90
73.	Khurda	Tangi	Jankia	63
74.	Koraput	Jeypore	Anta	75
75.	Koraput	Jeypore	Jeypore	46
76.	Koraput	Jeypore	Umeri	56
77.	Malkangiri	Kalimela	Kalimela	68
78.	Malkangiri	Khairput	Govindpali	100
79.	Malkangiri	Korukonda	M.V.7	53

Sl. No.	District	Block	Location	Nitrate (mg/l)
80.	Malkangiri	Maithili	Bejaguda New	47
81.	Mayurbhanj	Morada	Chitrada	55
82.	Nawapada	Khariar	Khariar	160
83.	Nawapada	Khariar	Sanmaheswar	46
84.	Nawapada	Komna	Burkhiakomna	124
85.	Nawapada	Komna	Komna	155
86.	Nawapada	Nawapara	Khariar Road	48
87.	Nawapada	Sinapallii	Tukla	56
88.	Nayagarh	Gania	Mahipur	123
89.	Nayagarh	Odagaon	Purusottampur	126
90.	Phulbani	Baliguda	Kurtamgarh	85
91.	Phulbani	Daringbadi	G.Udaigiri	202
92.	Phulbani	Daringbadi	Simanbadi	75
93.	Phulbani	Raikia	Sankarakhol	186
94.	Puri	Gop	Nimapara	52
95.	Puri	Nimapara	Kakatpur	78
96.	Puri	Puri Sadar	Chandanpur	94
97.	Sambalpur	Dhankuada	Christianpara	131
98.	Sambalpur	Dhankuada	Remerha	102
99.	Sambalpur	Jhamankira	Parmanpur	65
100.	Sambalpur	Jhujumura	Bhojpur	51
101.	Sambalpur	Jhujumura	Sindurpank	50
102.	Sambalpur	Rairakhol	Rairakhol	46
103.	Sambalpur	Rengali	Bamra	95
104.	Sundergarh	Hingiri	Gopalpur	65
105.	Sundergarh	Kutra	Kutra	148
106.	Sundergarh	Lahunipada	Laxmipos	146
107.	Sundergarh	Lathikata	Vedavyas Chak	132
108.	Sundergarh	Sabdega	Rajgangpur	86
109.	Sundergarh	Tangarpalli	Deolipali	60
110.	Sonapur	Binika	Phulmuthi	152
111.	Sonapur	Dungripalli	Dungripalli	50
112.	Sonapur	Sonepur	Harbanga	87
Punjab				
1.	Amritsar	Goindwal	Goindwal 07	286
2.	Amritsar	Patti	Bhagupur 07	95
3.	Bathinda	Bathinda	Balluana I	54
4.	Bathinda	Bathinda	Kot Shamir	229
5.	Bathinda	Bathinda	Nahinwala	227
6.	Bathinda	Maur	Maisar Khana	106
7.	Bathinda	Maur	Maur Mandi	115
8.	Bathinda	Phul (West)	Phul	61
9.	Bathinda	Rampura	Jhanduke	206

Sl. No.	District	Block	Location	Nitrate (mg/l)
10.	Bathinda	Sangat	Jassi Bhagwali	108
11.	Bathinda	Sangat	Kalla Bandar	621
12.	Bathinda	Talwandi Sabo	Bhagibandar	146
13.	Bathinda	Talwandi Sabo	Jajjal	257
14.	Bathinda	Talwandi Sabo	Lahri	401
15.	Faridkot	Faridkot	Chand Baja	72
16.	Faridkot	Faridkot	Mehmuana	168
17.	Faridkot	Kotkapura	Dhilwan Kalan	109
18.	Faridkot	Kotkapura	Kot Kapura	287
19.	Faridkot	Kotkapura	Matta	60
20.	Fatehgarh	Bassi Pathan	Noganwan	85
21.	Fatehgarh	Sirhind	Madhopur I	52
22.	Firozpur	Abohar	Bazirdpura	223
23.	Firozpur	Abohar	Kundal I	167
24.	Firozpur	Gahll Kurd	Piyarana	69
25.	Firozpur	Guru Harsahai	Sohangarh Ratte	71
26.	Firozpur	Khuian Sarwar	Alamgarh	170
27.	Firozpur	Khuian Sarwar	Danewal Satkosi	241
28.	Gurdaspur	Batala	Batala	138
29.	Gurdaspur	Batala	Bhagowal	55
30.	Gurdaspur	Kalanaur	Kalanaur I	146
31.	Gurdaspur	Pathankot	Gharotakalan	521
32.	Hoshiarpur	Hazipur	Nagal Bihala	64
33.	Jalandhar	Rurkakaln	Udhampur	105
34.	Kapurthala	Kapurthala	Kapurthala	105
35.	Ludhiana	Ludhiana-I	Kohara	104
36.	Ludhiana	Machhiwara	Mushkabad	58
37.	Ludhiana	Machhiwara	Sherian	57
38.	Mansa	Bhiki	Ralla	80
39.	Mansa	Budhlada	Kot Dhamru	206
40.	Mansa	Budlada	Borawal	77
41.	Mansa	Mansa	Mansa	348
42.	Mansa	Mansa	Rar	70
43.	Moga	Bagha Purana	Samal Sari	45
44.	Muktsar	Lambi	Lambi	944
45.	Muktsar	Malout	Kabar Wala	115
46.	Muktsar	Muktsar	Bhaliana	469
47.	Muktsar	Muktsar	Doda	83
48.	Muktsar	Muktsar	Gidderbaha	149
49.	Muktsar	Muktsar	Muktsar	202
50.	Nawanshahr	Nawanshahr	Rahon	77
51.	Patiala	Derabassi	Antala	52
52.	Patiala	Rajpura	Banur	47

Sl. No.	District	Block	Location	Nitrate (mg/l)
53.	Patiala	Rajpura	Haluka	51
54.	Rupnagar	Anandpur Sahib	Saijowal	64
55.	Rupnagar	Nurpur Bedi	Dumewal	69
56.	Rupnagar	Nurpur Bedi	Nurpurbedi	60
57.	Sangrur	Andana	Bhulan	1180
58.	Sangrur	Lehragaga	Daska	107
59.	Sangrur	Lehragaga	Ghorenab (s)	110
Rajasthan				
1.	Ajmer	Arain	Arian	221
2.	Ajmer	Arain	Dasuk	79
3.	Ajmer	Arain	Kanpur	78
4.	Ajmer	Bhinai	Bandanwara	325
5.	Ajmer	Bhinai	Ludiyana	256
6.	Ajmer	Jawaja	Baglias	96
7.	Ajmer	Jawaja	Beawar	63
8.	Ajmer	Masuda	Masuda	86
9.	Ajmer	Masuda	Pakhriawas	47
10.	Ajmer	Pisangan	Lamana	52
11.	Ajmer	Silora	Paner	491
12.	Ajmer	Srinagar	Nasirabad	327
13.	Alwar	Bansur	Chattarpura	54
14.	Alwar	Kathumar	Kathumar	254
15.	Alwar	Kathumar	Titpuri	47
16.	Alwar	Kishangarh	Bas Kirpalnagar	520
17.	Alwar	Laxmangarh	Barodamev	113
18.	Alwar	Laxmangarh	Govindgarh	79
19.	Alwar	Mandawar	Tatarpur	123
20.	Alwar	Nimrana	Nimrana	51
21.	Alwar	Rajgarh	Tehla	126
22.	Alwar	Ramgarh	Nogaonwa	327
23.	Alwar	Ramgarh	Ramgarh	157
24.	Alwar	Thanagazi	Narainpur	60
25.	Alwar	Thanagazi	Partapgarh	57
26.	Alwar	Thanagazi	Torikabas	54
27.	Alwar	Tijara	Bhindusi	57
28.	Alwar	Tijara	Hassanpura	95
29.	Alwar	Tijara	Jagmal Heri	78
30.	Alwar	Tijara	Nimli	78
31.	Alwar	Umrain	Chirwai	55
32.	Banswara	Bagidora	Kalinjra	202
33.	Banswara	Garhi	Arthuna	57
34.	Banswara	Ghatol	Bhungra	168
35.	Banswara	Ghatol	Dungaria	110

Sl. No.	District	Block	Location	Nitrate (mg/l)
36.	Banswara	Ghatol	Narwali	115
37.	Banswara	Ghatol	Sawania	61
38.	Banswara	Ghatol	Senwasa	67
39.	Banswara	Sajjanganrh	Bhilkua	51
40.	Banswara	Sajjanganrh	Chota Dungra	156
41.	Banswara	Talwara	Banswara	105
42.	Banswara	Talwara	Barodia	89
43.	Banswara	Talwara	Borotalab	48
44.	Baran	Anta	Mangrol	50
45.	Baran	Baran	Bamla	85
46.	Baran	Chabra	Chabra	60
47.	Baran	Chipabaord	Chhipa Barod	95
48.	Baran	Kasbathana	Kasba Thana	60
49.	Baran	Kasbathana	Shahabad	50
50.	Baran	Kishanganj	Kishanganj	225
51.	Barmer	Baitu	Undu	80
52.	Barmer	Balotra	Asotra	50
53.	Barmer	Balotra	Doli	176
54.	Barmer	Balotra	Thob	311
55.	Barmer	Barmer	Bachhbar	198
56.	Barmer	Barmer	Barmer	532
57.	Barmer	Barmer	Bisala	580
58.	Barmer	Barmer	Ghonia	127
59.	Barmer	Barmer	Hathitala	297
60.	Barmer	Barmer	Jasai	50
61.	Barmer	Barmer	Kharin	892
62.	Barmer	Barmer	Nimri (Radewa)	54
63.	Barmer	Barmer	Sanawara	90
64.	Barmer	Barmer	Sanlor	88
65.	Barmer	Barmer	Sasion-Ka-Kua	125
66.	Barmer	Barmer	Sihani	131
67.	Barmer	Barmer	Sutharon Ki Dha	95
68.	Barmer	Chohtan	Alamsar	255
69.	Barmer	Chohtan	Bhakasar	233
70.	Barmer	Chohtan	Chohtan	95
71.	Barmer	Chohtan	Dhok	126
72.	Barmer	Chohtan	Kundanpur	93
73.	Barmer	Chohtan	Sedwa	92
74.	Barmer	Chohtan	Sihaniya	157
75.	Barmer	Chohtan	Siyaga Tala	104
76.	Barmer	Chohtan	Tarla	291
77.	Barmer	Dhorimanna	Berigaon	97
78.	Barmer	Dhorimanna	Dhanau	60

Sl. No.	District	Block	Location	Nitrate (mg/l)
79.	Barmer	Dhorimanna	Dhorimanna	96
80.	Barmer	Dhorimanna	Kateria	89
81.	Barmer	Dhorimanna	Padmaniyon	106
82.	Barmer	Dhorimanna	Piparli Gaon	132
83.	Barmer	Dhorimanna	Ramji Ka Gol	195
84.	Barmer	Sheo	Balewa	345
85.	Barmer	Sheo	Gujro Ka Bera	75
86.	Barmer	Sheo	Jawansinghkiber	75
87.	Barmer	Sheo	Kanasar	180
88.	Barmer	Sheo	Kashmir	141
89.	Barmer	Sheo	Nand	342
90.	Barmer	Sheo	Redana	100
91.	Barmer	Sindri	Adel	136
92.	Barmer	Sindri	Chawa	130
93.	Barmer	Siwana	Devra	163
94.	Barmer	Siwana	Samdari	305
95.	Barmer	Siwana	Siwana	180
96.	Bharatpur	Bayana	Salabad	64
97.	Bharatpur	Deeg	Mandhera	148
98.	Bharatpur	Kaman	Satwas	642
99.	Bharatpur	Kumher	Sabora	151
100.	Bharatpur	Nadbai	Lulhara	102
101.	Bharatpur	Nagar	Gulpura	82
102.	Bharatpur	Nagar	Jaisari	89
103.	Bharatpur	Roopwas	Dahinagaon	700
104.	Bharatpur	Roopwas	Khanua	220
105.	Bharatpur	Roopwas	Uchain	53
106.	Bharatpur	Sewar	Chiksana	50
107.	Bharatpur	Sewar	Rarah Pzi	145
108.	Bharatpur	Weir	Weir	87
109.	Bhilwara	Asind	Badnor	65
110.	Bhilwara	Asind	Barasni	84
111.	Bhilwara	Asind	Tiloli	166
112.	Bhilwara	Banera	Baneramataji	84
113.	Bhilwara	Banera	Raila Road	284
114.	Bhilwara	Hurda	Gulabpura	51
115.	Bhilwara	Jahazpur	Paroli	76
116.	Bhilwara	Kotri	Kotari	247
117.	Bhilwara	Kotri	Kotri	137
118.	Bhilwara	Kotri	Sawaipur	125
119.	Bhilwara	Kotri	Sawaipur	272
120.	Bhilwara	Mandalgarh	Mandalgarh	128
121.	Bhilwara	Sahara	Gangapur	800

Sl. No.	District	Block	Location	Nitrate (mg/l)
122.	Bhilwara	Suwana	Mandapia Rs	65
123.	Bikaner	Bikaner	Dantor	130
124.	Bikaner	Bikaner	Jalwali	193
125.	Bikaner	Bikaner	Kalyansar	75
126.	Bikaner	Bikaner	Karmisar	170
127.	Bikaner	Bikaner	Kharbaro	320
128.	Bikaner	Bikaner	Lakhansar	160
129.	Bikaner	Bikaner	Raner	186
130.	Bikaner	Dungargarh	Lakhasar	405
131.	Bikaner	Dungargarh	Lodera	161
132.	Bikaner	Kolayat	Amarpura	260
133.	Bikaner	Kolayat	Bajju	326
134.	Bikaner	Kolayat	Lunkha	945
135.	Bikaner	Kolayat	Mankasar	310
136.	Bikaner	Kolayat	Ranjitpura	180
137.	Bikaner	Kolayat	Tanwar Wala	59
138.	Bikaner	Lunkaransar	Baderan	120
139.	Bikaner	Lunkaransar	Chhatargarh	1005
140.	Bikaner	Lunkaransar	Gorabdesar	120
141.	Bikaner	Lunkaransar	Kalu	121
142.	Bikaner	Lunkaransar	Mahajan	50
143.	Bikaner	Lunkaransar	Malkisar	639
144.	Bikaner	Lunkaransar	Manaria	563
145.	Bikaner	Lunkaransar	Sadhsar	243
146.	Bikaner	Nokha	Kakku	833
147.	Bikaner	Nokha	Pithrasar	95
148.	Bundi	Keshoraipatan	Kapren	85
149.	Bundi	Nenwa	Nenwa	90
150.	Bundi	Talera	Bundi	80
151.	Chittaurgarh	Begun	Menal	550
152.	Chittaurgarh	Bhadesar	Akola	171
153.	Chittaurgarh	Dungla	Mohada	47
154.	Chittaurgarh	Gangrar	Gangrar	275
155.	Chittaurgarh	Kapasan	Singhpur	110
156.	Chittaurgarh	Rashmi	Rashmi	620
157.	Churu	Churu	Binasar	65
158.	Churu	Churu	Ghantel	800
159.	Churu	Churu	Sirsala	400
160.	Churu	Rajgarh	Bhakra	104
161.	Churu	Rajgarh	Rajgarh	390
162.	Churu	Rajgarh	Ratanpura	625
163.	Churu	Rajgarh	Sankhu	150
164.	Churu	Ratangarh	Bhojasar	98

Sl. No.	District	Block	Location	Nitrate (mg/l)
165.	Churu	Ratangarh	Biramsar	116
166.	Churu	Ratangarh	Gorisar	62
167.	Churu	Ratangarh	Malasar	70
168.	Churu	Ratangarh	Perihara	192
169.	Churu	Ratangarh	Rajaldesar	67
170.	Churu	Ratangarh	Ratangarh	73
171.	Churu	Ratangarh	Shella	213
172.	Churu	Ratangarh	Todiasar	412
173.	Churu	Sardar Sahar	Bandhanau	215
174.	Churu	Sardar Sahar	Choti Sawai	120
175.	Churu	Sardar Sahar	Gharsisar	120
176.	Churu	Sardar Sahar	Hardesar	370
177.	Churu	Sardar Sahar	Khundia	235
178.	Churu	Sardar Sahar	Mehrasar	378
179.	Churu	Sardar Sahar	Melusar	57
180.	Churu	Sardar Sahar	Melusar	100
181.	Churu	Sardar Sahar	Mittasar	650
182.	Churu	Sardar Sahar	Nainasar	92
183.	Churu	Sardar Sahar	Ranasar	432
184.	Churu	Sardar Sahar	Sardarshahar	51
185.	Churu	Sardar Sahar	Somasar	144
186.	Churu	Sardar Sahar	Udasar	110
187.	Churu	Sujangarh	Bamboo	400
188.	Churu	Sujangarh	Bidasar	285
189.	Churu	Sujangarh	Guleriya	260
190.	Churu	Sujangarh	Salasar	1150
191.	Churu	Taranagar	Bhaleri	338
192.	Churu	Taranagar	Dadrewa	108
193.	Dausa	Dausa	Aluda	460
194.	Dausa	Dausa	Bapi	89
195.	Dausa	Dausa	Kalipahari	153
196.	Dausa	Lalsot	Bilona Kalan	160
197.	Dausa	Lalsot	Lalsot	59
198.	Dausa	Mahuwa	Dhand	70
199.	Dausa	Mahuwa	Mahuwa	77
200.	Dausa	Mahuwa	Pipalkheda	302
201.	Dausa	Sikrai	Gijgarh	68
202.	Dausa	Sikrai	Langra Balaji	75
203.	Dhaulpur	Basari	Pipehara	142
204.	Dhaulpur	Dhaulpur	Aithmeel	90
205.	Dhaulpur	Dhaulpur	Basai Nawab	378
206.	Dhaulpur	Dhaulpur	Dhaulpur	242
207.	Dhaulpur	Dhaulpur	Salempur	77

Sl. No.	District	Block	Location	Nitrate (mg/l)
208.	Dhaulpur	Rajakhera	Farakpura	77
209.	Dhaulpur	Rajakhera	Mangraul	715
210.	Dhaulpur	Rajakhera	Maraina	145
211.	Dungarpur	Aspur	Aspur	112
212.	Dungarpur	Aspur	Nayagaon	86
213.	Dungarpur	Dugarpur	Dungarpur	74
214.	Dungarpur	Dugarpur	Hatai	154
215.	Dungarpur	Dugarpur	Nayadera	60
216.	Dungarpur	Sagwara	Baroda	158
217.	Dungarpur	Sagwara	Nanthoda	166
218.	Dungarpur	Sagwara	Sagwara	60
219.	Dungarpur	Simalwara	Peeth	53
220.	Ganganagar	Anupgarh	Anupgarh	271
221.	Ganganagar	Anupgarh	Banda Colony	124
222.	Ganganagar	Anupgarh	Gomanwali	335
223.	Ganganagar	Anupgarh	Jaitsar	104
224.	Ganganagar	Karanpur	Kharla	140
225.	Ganganagar	Karanpur	Rupanagar	49
226.	Ganganagar	Raisingnagar	Dabla	51
227.	Ganganagar	Raisingnagar	Muklawar	165
228.	Ganganagar	Sardulsahar	Morjhand Kheri	71
229.	Ganganagar	Suratgarh	Birmana	65
230.	Ganganagar	Suratgarh	Lalgariya	86
231.	Ganganagar	Suratgarh	Suratgarh	479
232.	Hanumangarh	Bhadra	Dungrana	46
233.	Hanumangarh	Bhadra	Malsisar	130
234.	Hanumangarh	Bhadra	Munsari	79
235.	Hanumangarh	Hanumangarh	Dholipal	78
236.	Hanumangarh	Hanumangarh	Kohla	162
237.	Hanumangarh	Hanumangarh	Munda	49
238.	Hanumangarh	Nohar	Bhukarka	82
239.	Hanumangarh	Nohar	Dhanasar	71
240.	Hanumangarh	Nohar	Gandehali	146
241.	Hanumangarh	Nohar	Lakhasar	108
242.	Hanumangarh	Nohar	Lakheran	575
243.	Hanumangarh	Nohar	Nohar	47
244.	Hanumangarh	Nohar	Pallu	200
245.	Hanumangarh	Nohar	Rawatsar	85
246.	Jaipur	Amer	Amber	121
247.	Jaipur	Amer	Bhanpur Kalan	57
248.	Jaipur	Amer	N.Purohitan	92
249.	Jaipur	Bassi	Bassi	395
250.	Jaipur	Bassi	Kanota	115

Sl. No.	District	Block	Location	Nitrate (mg/l)
251.	Jaipur	Bassi	Tunga	64
252.	Jaipur	Chaksu	Rupari Kalan	50
253.	Jaipur	Chaksu	Shivdaspura	188
254.	Jaipur	Dudu	Dudu	48
255.	Jaipur	Dudu	Mozmabad	89
256.	Jaipur	Dudu	Nasnota	54
257.	Jaipur	Dudu	Pallukhurd	257
258.	Jaipur	Govindgarh	Chomu	50
259.	Jaipur	Jamwa Ramgarh	Hastal Ka Bas	89
260.	Jaipur	Jamwa Ramgarh	Rasala	80
261.	Jaipur	Jhotwara	Mehla	48
262.	Jaipur	Jhotwara	Sirsi	120
263.	Jaipur	Kotputli	Kotputli	60
264.	Jaipur	Phagi	Dawach	65
265.	Jaipur	Sanganer	Durgapura	130
266.	Jaipur	Sanganer	Goner	78
267.	Jaipur	Sanganer	Sukhpuria	64
268.	Jaipur	Sanganer	Watika	95
269.	Jaisalmer	Jaisalmer	Baramsar	75
270.	Jaisalmer	Jaisalmer	Deva	320
271.	Jaisalmer	Jaisalmer	Jaisalmer	125
272.	Jaisalmer	Jaisalmer	Nokh	134
273.	Jaisalmer	Sam	Asutar	70
274.	Jaisalmer	Sam	Gamanewala	46
275.	Jaisalmer	Sam	Khuyiala	175
276.	Jaisalmer	Sam	Kishangarh	105
277.	Jaisalmer	Sam	Lakhasar	230
278.	Jaisalmer	Sam	Ranau	55
279.	Jaisalmer	Sam	Tanot	900
280.	Jaisalmer	Sankra	Balar	402
281.	Jaisalmer	Sankra	Bhainsara	95
282.	Jaisalmer	Sankra	Gomath	160
283.	Jaisalmer	Sankra	Kalewa	70
284.	Jaisalmer	Sankra	Lawan	50
285.	Jaisalmer	Sankra	Luna Kalan	610
286.	Jaisalmer	Sankra	Madasar	115
287.	Jaisalmer	Sankra	Phalsund	75
288.	Jaisalmer	Sankra	Pokran	70
289.	Jaisalmer	Sankra	Rajmathai	150
290.	Jaisalmer	Sankra	Sankra	400
291.	Jalore	Bhinmal	Bhinmal	54
292.	Jalore	Bhinmal	Junjani	127
293.	Jalore	Bhinmal	Khokagaon	81

Sl. No.	District	Block	Location	Nitrate (mg/l)
294.	Jalore	Jalore	Bagra	145
295.	Jalore	Jalore	Bhadrajan Dhani	138
296.	Jalore	Jalore	Jalore	46
297.	Jalore	Jaswantpura	Punak Kalan	99
298.	Jalore	Jaswantpura	Ramseen	504
299.	Jalore	Raniwara	Kagmala (Kundanpura)	94
300.	Jalore	Raniwara	Raniwara	55
301.	Jalore	Sanchore	Doongri	161
302.	Jalore	Sanchore	Nagolari	129
303.	Jalore	Sanchore	Sarnau	125
304.	Jalore	Sayla	Bawatra	103
305.	Jalore	Sayla	Jiwana	90
306.	Jalore	Sayla	Mokhan Khera	101
307.	Jhalawar	Bakani	Asalpur	46
308.	Jhalawar	Dag	Dag	250
309.	Jhalawar	Dag	Gangdhar	238
310.	Jhalawar	Dag	Gauradiya Kalan	159
311.	Jhalawar	Dag	Gwalat	75
312.	Jhalawar	Jhalrapatan	Aktasa	61
313.	Jhalawar	Jhalrapatan	Anvlikalan	64
314.	Jhalawar	Jhalrapatan	Mishroli	71
315.	Jhalawar	Manoharthana	Aklara	110
316.	Jhalawar	Manoharthana	Gajwara	75
317.	Jhalawar	Manoharthana	Manohar Thana	265
318.	Jhalawar	Manoharthana	Saredi	126
319.	Jhalawar	Pirwa	Jaswantpura	76
320.	Jhalawar	Pirwa	Karvan Kala	90
321.	Jhunjhunun	Alsisar	Birmi	55
322.	Jhunjhunun	Alsisar	Churela	116
323.	Jhunjhunun	Alsisar	Malsisar	462
324.	Jhunjhunun	Chirawa	Mandrela	73
325.	Jhunjhunun	Jhunjhunun	Jhunjhunun	88
326.	Jhunjhunun	Khetri	Gothra	75
327.	Jhunjhunun	Khetri	Paporana	183
328.	Jhunjhunun	Nawalgarh	Mukundgarh	83
329.	Jhunjhunun	Udaipurwati	Gurha	123
330.	Jodhpur	Bilara	Benan	78
331.	Jodhpur	Bilara	Bhawi	102
332.	Jodhpur	Luni	Mogra	243
333.	Jodhpur	Luni	Raron Ki Dhani	132
334.	Jodhpur	Luni	Salawas	335
335.	Jodhpur	Mandore	Chopasni Nath	97

Sl. No.	District	Block	Location	Nitrate (mg/l)
336.	Jodhpur	Mandore	Dangiwas	78
337.	Jodhpur	Mandore	Dewalia	87
338.	Jodhpur	Mandore	Indorka	109
339.	Jodhpur	Mandore	Jodhpur	710
340.	Jodhpur	Mandore	Karani	100
341.	Jodhpur	Mandore	Lordi	565
342.	Jodhpur	Mandore	Manakalao	102
343.	Jodhpur	Osian	Balarwa	65
344.	Jodhpur	Osian	Baori	83
345.	Jodhpur	Osian	Jud	100
346.	Jodhpur	Osian	Osian	129
347.	Jodhpur	Osian	Palari	84
348.	Jodhpur	Osian	Palri	82
349.	Jodhpur	Phalodi	Khichan	96
350.	Jodhpur	Phalodi	Moriya	70
351.	Jodhpur	Phalodi	Phalodi	55
352.	Jodhpur	Shergarh	Shergarh	77
353.	Karauli	Hindon	Islampur	51
354.	Karauli	Nadoti	Badh Kamla	69
355.	Karauli	Nadoti	Guda Chanderji	62
356.	Karauli	Sapotra	Bijalpur	152
357.	Karauli	Sapotra	Sapotra	253
358.	Karauli	Todabhim	Karanpura	50
359.	Kota	Itawa	Khatoli	56
360.	Kota	Khairabad	Antralia	149
361.	Kota	Sangod	Rajgarh	148
362.	Kota	Sultanpur	Gadepan	81
363.	Kota	Sultanpur	Mandavra	114
364.	Nagaur	Degana	Degana Jn.	67
365.	Nagaur	Degana	Harsor	213
366.	Nagaur	Didwana	Banthri	174
367.	Nagaur	Didwana	Bari Chhabri	61
368.	Nagaur	Didwana	Chhoti Khatu	115
369.	Nagaur	Didwana	Daulatpura	95
370.	Nagaur	Didwana	Kerap	175
371.	Nagaur	Didwana	Kolia	167
372.	Nagaur	Didwana	Nimod	196
373.	Nagaur	Didwana	Raghunathpura	58
374.	Nagaur	Didwana	Singhana	521
375.	Nagaur	Jayal	Deh	175
376.	Nagaur	Jayal	Jayal	395
377.	Nagaur	Jayal	Katoti	182
378.	Nagaur	Jayal	Soneli	53

Sl. No.	District	Block	Location	Nitrate (mg/l)
379.	Nagaur	Jayal	Tarnu	254
380.	Nagaur	Kuchaman	Mithri	64
381.	Nagaur	Ladnu	Bankalia	282
382.	Nagaur	Ladnu	Ladnu	382
383.	Nagaur	Ladnu	Sanward	450
384.	Nagaur	Merta	Merta City	112
385.	Nagaur	Merta	Sangwa Ki Dhani	57
386.	Nagaur	Mundwa	Khimsar	143
387.	Nagaur	Nagaur	Amarpura	162
388.	Nagaur	Nagaur	Barani	183
389.	Nagaur	Nagaur	Chilo	292
390.	Nagaur	Nagaur	Gurha	73
391.	Nagaur	Nagaur	Harima	164
392.	Nagaur	Nagaur	Nagaur	46
393.	Nagaur	Nagaur	Nagaur	601
394.	Nagaur	Nagaur	Rol	53
395.	Nagaur	Parbatsar	Bagot	112
396.	Nagaur	Parbatsar	Mangalana	64
397.	Nagaur	Parbatsar	Parbatsar	94
398.	Nagaur	Parbatsar	Piplad	508
399.	Nagaur	Riyan	Kekind	101
400.	Nagaur	Riyan	Kuchera	267
401.	Pali	Bali	Khudala	93
402.	Pali	Bali	Perwa	50
403.	Pali	Bali	Radawas	120
404.	Pali	Jaitaran	Nimaj	72
405.	Pali	Pali	Gumti	175
406.	Pali	Raipur	Hajiwas	49
407.	Pali	Sojat	Kanawas	54
408.	Pali	Sojat	Sojat	108
409.	Pali	Sumerpur	Balwana	50
410.	Pali	Sumerpur	Sumerpur	50
411.	Pratapgarh	Arnod	Mahooda	120
412.	Pratapgarh	Arnod	Ninor	100
413.	Pratapgarh	Barisadri	Barisadri	76
414.	Pratapgarh	Dhariawad	Dhariawad	63
415.	Pratapgarh	Dhariawad	Mungana	59
416.	Pratapgarh	Pipalkhunt	Pipal Khunt	64
417.	Pratapgarh	Pratapgarh	Suhagpura	172
418.	Rajsamand	Amet	Nadiawala	84
419.	Rajsamand	Bhim	Baghana	128
420.	Rajsamand	Bhim	Bali	96
421.	Rajsamand	Bhim	Bhim	124

Sl. No.	District	Block	Location	Nitrate (mg/l)
422.	Rajsamand	Khamnor	Khamnor	77
423.	Rajsamand	Kumbhalgarh	Kancholi	103
424.	Rajsamand	Kumbhalgarh	Kelwara	220
425.	Rajsamand	Kumbhalgarh	Kitela	50
426.	Rajsamand	Rajsamand	Rajsamand	205
427.	Sawai Madhopur	Bamanwas	Bamnawas	289
428.	Sawai Madhopur	Bamanwas	Piplai	72
429.	Sawai Madhopur	Bolni	Bhadoti	109
430.	Sawai Madhopur	Bolni	Bonali	87
431.	Sawai Madhopur	Bolni	Jastana	300
432.	Sawai Madhopur	Gangapur	Gangapur	85
433.	Sawai Madhopur	Khandar	Chann	73
434.	Sawai Madhopur	Khandar	Khandar	256
435.	Sawai Madhopur	Sawai Madhopur	Hindwar	338
436.	Sawai Madhopur	Sawai Madhopur	Kushtala	81
437.	Sawai Madhopur	Sawai Madhopur	Ranthambor	50
438.	Sawai Madhopur	Sawai Madhopur	Surwal	50
439.	Sikar	Danta Ramgarh	Bai	530
440.	Sikar	Danta Ramgarh	Karanpura	63
441.	Sikar	Danta Ramgarh	Nosal	60
442.	Sikar	Dhod	Binjyasi	168
443.	Sikar	Dhod	Dhod	50
444.	Sikar	Dhod	Rashidpura	112
445.	Sikar	Dhod	Sewad Bari	85
446.	Sikar	Dhod	Shahpura	465
447.	Sikar	Fatehpur	Fatehpur	65
448.	Sikar	Fatehpur	Rohalsobhsar	220
449.	Sikar	Fatehpur	Rookansar	174
450.	Sikar	Kandela	Dhudhwalo Ka Bas	155
451.	Sikar	Khandela	Kanwat	75
452.	Sikar	Laxamangarh	Bau	121
453.	Sikar	Laxamangarh	Ghana	218
454.	Sikar	Laxamangarh	Jajod	70
455.	Sikar	Laxamangarh	Nechwa	69
456.	Sikar	Neem Ka Thana	Neem Ka Thana	76
457.	Sikar	Neem Ka Thana	Patan	103
458.	Sikar	Piprali	Katrathal	85
459.	Sirohi	Aburaod	Manpur	192
460.	Sirohi	Aburaod	Siyana	50
461.	Sirohi	Pindwara	Malera	57
462.	Sirohi	Pindwara	Sarupganj	153
463.	Sirohi	Pindwara	Virwara	586
464.	Sirohi	Ravdar	Reodar	123

Sl. No.	District	Block	Location	Nitrate (mg/l)
465.	Sirohi	Ravdar	Warman	69
466.	Sirohi	Sheoganj	Posaliya	46
467.	Sirohi	Sirohi	Doduwa	142
468.	Sirohi	Sirohi	Palri	72
469.	Sirohi	Sirohi	Sirohi	442
470.	Tonk	Niwai	Sohela	102
471.	Tonk	Todaraisingh	Hamirpur	66
472.	Tonk	Todaraisingh	Todaraisingh	123
473.	Tonk	Tonk	Jharana	900
474.	Udaipur	Badgaon	Ramgiri (Badagaon)	113
475.	Udaipur	Bhinder	Bhinder	71
476.	Udaipur	Bhinder	Hariyab	72
477.	Udaipur	Bhinder	Kanod	312
478.	Udaipur	Bhinder	Kheroda	47
479.	Udaipur	Girwa	Barapal	56
480.	Udaipur	Girwa	Kanpur	108
481.	Udaipur	Girwa	Kurabar	240
482.	Udaipur	Girwa	Nai	148
483.	Udaipur	Girwa	Savina	72
484.	Udaipur	Gogunda	Gogunda	141
485.	Udaipur	Gogunda	Jaswantgarh	212
486.	Udaipur	Gogunda	Punawali	300
487.	Udaipur	Jhadol	Jharol	86
488.	Udaipur	Jhadol	Koliyari	159
489.	Udaipur	Mavli	Bhoyana	55
490.	Udaipur	Mavli	Fatehnagar	88
491.	Udaipur	Mavli	Gadoli	81
492.	Udaipur	Salumber	Bassi	133
493.	Udaipur	Salumber	Khairka	113
494.	Udaipur	Salumber	Salumber	916
495.	Udaipur	Sarada	Sarada	202
496.	Udaipur	Sarada	Semri	90
Tamil Nadu				
1.	Chennai	Chennai	Thiyagarayanagar	56
2.	Coimbatore	Annur	Ganesapuram	160
3.	Coimbatore	Avinashi	Avinashi I	317
4.	Coimbatore	Avinashi	Karamadai	103
5.	Coimbatore	Avinashi	Pongalur I	92
6.	Coimbatore	Gudimangalam	Periyapatti	213
7.	Coimbatore	Kinathukadavu	Sokkanur	150
8.	Coimbatore	Palladam	Palladam I	307
9.	Coimbatore	Pollachi North	Chinnaripalayam	358

Sl. No.	District	Block	Location	Nitrate (mg/l)
10.	Coimbatore	Pollachi North	Ponnaiyur	155
11.	Coimbatore	Pongalur	Nachipalayam	329
12.	Coimbatore	Sarkar Samakulam	Podanur1	202
13.	Coimbatore	Sarkar Samakulam	Vadavalli	162
14.	Coimbatore	Sulur	Sulur	209
15.	Coimbatore	Thondamuthur	Singanallur	101
16.	Coimbatore	Thondamuthur	Sugunapuram1	156
17.	Coimbatore	Tirupur	Perumanallur	154
18.	Coimbatore	Tirupur	Tiruppur	171
19.	Cuddalore	Viruthachalam	Kopuvanur	47
20.	Cuddalore	Viruthachalam	Vridhachalam1	115
21.	Dharmapuri	Dharmapuri	Bommidimalapuram	300
22.	Dharmapuri	Morappur	Odasalapatti	65
23.	Dharmapuri	Nallampalli	Indoor	185
24.	Dharmapuri	Pennagaram	Nagadasampatti	212
25.	Dindigul	Attur	Gandhigram	415
26.	Dindigul	Batalakundu	Kodai Road	304
27.	Dindigul	Dindigul	Dindigul2	236
28.	Dindigul	Dindigul	Hanumanthanagar	68
29.	Dindigul	Dindigul	Nandavanampatti	87
30.	Dindigul	Gijiliyamparai	Idayapatti	99
31.	Dindigul	Oddanchatram	Chattrapatti	236
32.	Dindigul	Palani	Kanakkanpatti	248
33.	Dindigul	Sanarpatti	Vadamadurai	81
34.	Dindigul	Vedasandur	Eriyodu	68
35.	Erode	Andhiyur	Attani	74
36.	Erode	Andhiyur	Bhavani1	415
37.	Erode	Andhiyur	Pudupalayam1	205
38.	Erode	Bhavani	Kavundapadi1	161
39.	Erode	Chennimalai	Chennimalai2	267
40.	Erode	Dharapuram	Dharapuram2	298
41.	Erode	Dharapuram	Karaiyur1	74
42.	Erode	Erode	Chittodu	118
43.	Erode	Gopichettipalaiyam	Kolappalur1	124
44.	Erode	Kangayam	Kangayam2	360
45.	Erode	Kangayam	Uthiyur	248
46.	Erode	Perundurai	Perundurai1	50
47.	Erode	Perundurai	Vijayamangalam1	242
48.	Erode	Sathyamangalam	Sathiyamangalam	112
49.	Erode	Tukkanayakkanpalayam	Bangalapudhur	87
50.	Erode	Vellaikovil	Muttur1	254
51.	Kancheepuram	St.Thomas	Anakkaputhur	129
52.	Kancheepuram	St.Thomas	Tambaram1	190

Sl. No.	District	Block	Location	Nitrate (mg/l)
53.	Kanyakumari	Agastheeswaram	Nagarkoil1	251
54.	Kanyakumari	Takkalai	Takkalai	52
55.	Kanyakumari	Tiruvattar	Kulasekharan	124
56.	Karur	Aravakurichi	Aravakurichi2	250
57.	Karur	K.Paramathi	Chinna Dharapuram	75
58.	Karur	K.Paramathi	Paramatti1	540
59.	Karur	Karur	Karur2	260
60.	Karur	Krishnarayapuram	Mayanur	300
61.	Karur	Thatheni	Jagatabi	232
62.	Karur	Thogamalai	Thogamalai	160
63.	Madurai	Alanganallur	V.Andippatti	198
64.	Madurai	Madurai East	Puliyankulam	74
65.	Namakkal	Elachipalayam	Elachipalayam1	242
66.	Namakkal	Elachipalayam	V.G.Patti	397
67.	Namakkal	Elachipalayam	Vaiyappamalai	533
68.	Namakkal	Mallasamudram	Kalipatti	68
69.	Namakkal	Mohanur	Valayapatti	273
70.	Namakkal	Namagiripettai	Ayilpatti	130
71.	Namakkal	Namagiripettai	Namagiripet	434
72.	Namakkal	Namagiripettai	Singalanadu Prm	415
73.	Namakkal	Namagiripettai	Udayarpalayam	62
74.	Namakkal	Namakkal	Namakkal2	167
75.	Namakkal	Paramathi	Irumbapalam	56
76.	Namakkal	Puduchatram	Talambadi	248
77.	Namakkal	Rasipuram	Rasipuram1	260
78.	Namakkal	Sendamangalam	K.Naickanpatti	149
79.	Namakkal	Tiruchengodu	Nallur1	267
80.	Namakkal	Tiruchengodu	Thiruchengodu	161
81.	Namakkal	Vannandurai	Mohanur1	50
82.	Namakkal	Vannandurai	Vennandur	136
83.	Nilgiris	Nilgiris	Udhagamandalam	62
84.	Perambalur	Alathur	Nakkaselam	45
85.	Perambalur	Perambalur	Perambalur2	52
86.	Pudukkottai	Aranthangi	Arantangi	55
87.	Pudukkottai	Kunnandarkovil	Keerannur	167
88.	Pudukkottai	Manamelkudi	Mimisal1	120
89.	Ramanathapuram	Mandapam	Mandapam	59
90.	Ramanathapuram	Mandapam	Thangachimadam	55
91.	Ramanathapuram	Mudukulattur	Mudukulathur	127
92.	Ramanathapuram	Tirupulani	Kilkkarai	413
93.	Salem	Ayodhyapattinam	Karipatti	74
94.	Salem	Gangavalli	P.Goundanpalyam	291

Sl. No.	District	Block	Location	Nitrate (mg/l)
95.	Salem	Kadayampatti	Tivettipatti	353
96.	Salem	Nangavalli	Nangavalli1	236
97.	Salem	Omalur	Omalur	174
98.	Salem	Panamarathupatti	Mallur1	335
99.	Salem	Valapadi	Sankaridrug	112
100.	Sivaganga	Kallal	Kallal	107
101.	Sivaganga	Sakkottai	Karaikudi	57
102.	Sivaganga	Singampunary	Singapureri	121
103.	Thanjavur	Tiruppandal	Tirupanandal	110
104.	Theni	Mayiladumparai	Gandamanur	143
105.	Tiruvannamalai	Chengam	Chengam2	187
106.	Tiruvannamalai	Tandampattu	Thanipadi	114
107.	Tiruvannamalai	Thiruvannamalai	Tiruvannamalai1	136
108.	Tirunelveli	Kilpavur	R.Pattinam	187
109.	Tirunelveli	Manur	Abishekapatti	103
110.	Tirunelveli	Manur	Manur1	80
111.	Tirunelveli	Melaneelithanallur	P.Chatram	224
112.	Tirunelveli	Radhapuram	Ovari	134
113.	Tirunelveli	Radhapuram	Radhapuram1	62
114.	Tirunelveli	Radhapuram	Valliyoar	132
115.	Tirunelveli	Vasudevanallur	Mullikulam1	99
116.	Tirunelveli	Vasudevanallur	Sivagiri	290
117.	Thiruvallur	Ellapuram	Uthukottai1	66
118.	Thiruvallur	Ponnamallee	Tirumazhisai	75
119.	Thiruvallur	Tiruttani	Tiruttani	71
120.	Trichy	Andanallur	Samayapuram	212
121.	Trichy	Manachanallur	Pulivalam	644
122.	Trichy	Manachanallur	Siruganur	306
123.	Trichy	Marungapuri	Tuvarankuruchi	114
124.	Trichy	Thuraiyur	Thuraiyur	90
125.	Tuticorin	Karunkulam	Devachayalpuram	453
126.	Tuticorin	Karunkulam	Maniyachi1	408
127.	Tuticorin	Kayattar	Kayattar	78
128.	Tuticorin	Ottapidaram	Eppodumvendram	71
129.	Tuticorin	Pudur	Vembur	105
130.	Tuticorin	Sattankulam	Sathankulam-N	231
131.	Tuticorin	Tiruchendur	Tiruchendur-E	138
132.	Tuticorin	Vilathikulam	Karisalkulam	172
133.	Vellore	Alangayam	Alangayam	180
134.	Vellore	Arcot	Arcot2	50
135.	Vellore	Gudiyattam	P.Agaram	195
136.	Vellore	Jolarpet	Kodiyur	150
137.	Vellore	Kandili	Alankuppam	120

Sl. No.	District	Block	Location	Nitrate (mg/l)
138.	Vellore	Kaveripakkam	Banavaram1	175
139.	Vellore	Pernampet	Sangilikuppam	75
140.	Vellore	Tirupattur	Vengalapuram	100
141.	Vellore	Vellore	Vellore1	210
142.	Vellore	Walajapet	Devadanam	150
143.	Vellore	Walajapet	Lalpet	65
144.	Vellore	Walajapet	Ranipet1	95
145.	Villupuram	Mailam	Vilangampadi	75
146.	Villupuram	Marakkanam	Tindivanam1	276
147.	Villupuram	Olakkur	Ollakkur	80
148.	Villupuram	Rishivandiyam	Rishivandiyam	78
149.	Villupuram	Tiyagaidurgam	Asanur	95
150.	Villupuram	Tiyagaidurgam	Tyagadurgam1	211
151.	Virudhunagar	Rajapalayam	Rajapalayam1	161
152.	Virudhunagar	Virudhunagar	Virudunagar	130
Uttar Pradesh				
1.	Agra	Achhanera	Soondhi chaurha	47
2.	Agra	Bah	Bah road	195
3.	Agra	Bichpuri	Shahaganj Prithvinath	126
4.	Agra	Etmadpur	Etmadpur	129
5.	Agra	Khairagarh	Kagraul	147
6.	Agra	Narkhi	Fatehabad	60
7.	Aligarh	Bijauli	Sankra	66
8.	Aligarh	Gonda	Gonda	95
9.	Aligarh	Gonda	Gorai	452
10.	Aligarh	Lodha	Aligarh	196
11.	Allahabad	Jasara	Jasara	85
12.	Ambedkar Nagar	Baskhari	Tanda AMD	83
13.	Ambedkar Nagar	Jahangirganj	Jahangirganj	94
14.	Ambedkar Nagar	Katehari	Akbarpur	84
15.	Auraiya	Auraiya	Auriya	88
16.	Badaun	Islamnagar	Islamnagar	87
17.	Badaun	Mion	Mion	118
18.	Badaun	Salarpur	Binawar	52
19.	Badaun	Ujhani	Badaun	107
20.	Badaun	Ujhani	Ujhani	118
21.	Baghpat	Pilana	Pilanu	69
22.	Balrampur	Sriduttganj	Sriduttganj	50
23.	Banda	Badokhar	Banda O/W	638
24.	Banda	Mahua	Atra	157
25.	Banda	Mahua	Pangara	77
26.	Barabanki	Masauli	Masauli chauraha	262

Sl. No.	District	Block	Location	Nitrate (mg/l)
27.	Bareilly	Baheri	Kanman	125
28.	Bareilly	Bhojipura	Bhojipura	205
29.	Basti	Parsurampur	Parsurampur	81
30.	Basti	Ramnagar	Bhanpur	140
31.	Bijnor	Kotwali	Nagina	53
32.	Bulandshahr	Dibai	Nandpur	139
33.	Bulandshahr	Sikandarabad	Chola Rly.Stn.	103
34.	Bulandshahr	Sikandrabad	Sikandrabad	50
35.	Bulandshahr	Syana	Bugrasi	122
36.	Chitrakoot	Manikpur	Bhauri	97
37.	Etah	Patiali	Patiali	62
38.	Etawah	Bharthana	Bharthana	48
39.	Fatehpur	Asodhar	Asothar	375
40.	Fatehpur	Khajua	Jahanabad	131
41.	Firozabad	Eka	Mustafabad	65
42.	G B Nagar	Dadri	Dadri	50
43.	G B Nagar	Dankaur	Dankaur	60
44.	G B Nagar	Jewar	Rabupura	162
45.	Ghaziabad	Bhojpura	Bhojpura	168
46.	Ghaziabad	Loni	Sahibabad	56
47.	Ghazipur	Saidpur	Saidpur	125
48.	Hamirpur	Kurara	Hamirpur	157
49.	Hamirpur	Maudaha	Mandaha	1162
50.	Hardoi	Ahrauri	Sahabad	185
51.	Hardoi	Harpalpur	Sawaijpur	90
52.	Hardoi	Sandila	Mohammadi	69
53.	Jaunpur	Machlisahar	SHP opp Tehsil (Machlisahar)	82
54.	Jaunpur	Ramnagar	NHS (Barsathi)	124
55.	Jhansi	Badagaon	Jhansi	61
56.	Jhansi	Bamaur	Bamaur (Farida)	60
57.	Kannauj	Umarda	Harharpur	124
58.	Kanpur Dehat	Malasa	Mohammadpur	73
59.	Kanpur Dehat	Malasa	Pukhrayan	72
60.	Lakhimpur	Pasgawan	Maigalganj	92
61.	Mahoba	Charkhari	Charkhari DW	651
62.	Mahoba	Kabrai	Kabrai	300
63.	Mathura	Farah	Farah	116
64.	Mathura	Goverdhan	Saunkh	295
65.	Mathura	Mat	Mat	98
66.	Mathura	Mathura	Vrindavan	76
67.	Mathura	Nandgaon	Barsana	240
68.	Mathura	Nandgaon	Kosi	59

Sl. No.	District	Block	Location	Nitrate (mg/l)
69.	Mathura	Naujheel	Naujheel	848
70.	Mathura	Raya	Raya	180
71.	Meerut	Parikshatgarh	Parikshatgarh	211
72.	Moradabad	Thakurdwara	Thakurdwara	56
73.	Muzaffarnagar	Morna	Morna	65
74.	Raebareli	Dih	Dih	128
75.	Raebareli	Harchandpur	Harchandpur	58
76.	Raebareli	rahi	Salon	64
77.	Rampur	Suar	Tanda	48
78.	Sant Ravidas Nagar	Aurai	Gyanpur NHS of Pali	100
79.	Sant Ravidas Nagar	Suriyanwan	Suriyanwan SHP	53
80.	Shahjahanpur	Sindhauli	Jalalabad	115
81.	Sitapur	Khairabad	Sitapur	122
82.	Sonbhadra	Babhani	Near Block Babhani	74
83.	Sonbhadra	Dudhi	SE of NHS (Dudhi)	70
84.	Sultanpur	Musafir Khana	Musafir Khana	191
85.	Unnao	Auras	Auras	82
86.	Unnao	GanjMuradabad	Bangarmau	456
87.	Unnao	Miyanganj	Miyanganj	50
88.	Unnao	Sumerpur	Siknadarapur	118
Uttarakhand				
1.	Dehradun	Sahaspur	Sabhawala	47
2.	Haridwar	Bahadabad	Dhanpura	61
3.	Udhamsinghnagar	Jaspur	Angadpur	45
4.	Udhamsinghnagar	Jaspur	Jaspur	68
5.	Udhamsinghnagar	Sitarganj	Kiccha	49
6.	Udhamsinghnagar	Sitarganj	Sitarganj	75
West Bengal				
1.	Bankura	Bishnupur	Basudevpur Ca	81
2.	Bankura	Indupur	Bheduasol	58
3.	Bankura	Indupur	Khirpai	81
4.	Bankura	Khatra-I	Khatra	49
5.	Bankura	Raipur-II	Raipur	81
6.	Bankura	Taldangra	Ghokunda	58
7.	Bardhaman	Andal	Dakshinkhanda	46
8.	Bardhaman	Raniganj	Raniganj	46

Prepared under the Guidance of:

Dr. S. C. Dhiman, Chairman, Central Ground Water Board

Shri Subrata Kunar, Member (SAM), Central Ground Water Board

Shri Sushil Gupta, Member (SML), Central Ground Water Board

Compiled by:

Dr. S. K. Jain, Scientist-‘D’, Central Ground Water Board, Faridabad

**Dr. Vivek Sharma, Senior Technical Assistant, Central Ground Water Board,
Faridabad**

Case Studies Contribution:

**Regional Director, Central Ground Water Board, South Eastern Central Region,
Chennai**

Regional Director, Central Ground Water Board, Central Region, Nagpur

Data Contribution:

Regional Director/ Officer-in-charge and officers / officials of NWHR Jammu/
NWR Chandigarh/ WR Jaipur/ WCR Ahmedabad/NCR Bhopal/ NCCR Raipur/ CR
Nagpur/ NR Lucknow/ MER Patna/ER Kolkata/ NER Guwahati/ SER Bhubaneswar/ SR
Hyderabad/ SWR Bangalore/ SECR Chennai/ KR Trivandrum/ UR Dehradun/ NHR
Dharamshala/ SUO Delhi

Central Ground Water Board, Ministry of Water Resources, Government of India, Bhujal Bhawan,
NH-IV, Faridabad-121001(Haryana), India